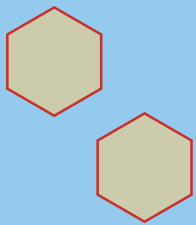


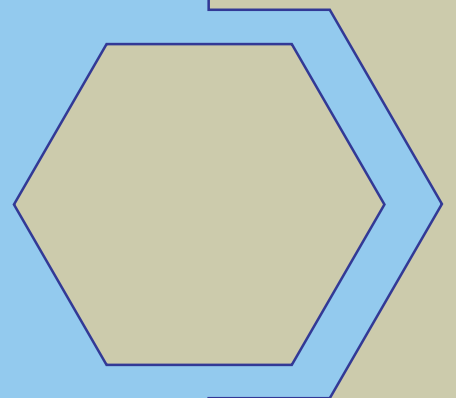
2007
course entry



gttr
Graduate Teacher
Training Registry

Annual
Statistical
Report

www.gttr.ac.uk



Your views:

We welcome your feedback on our wide range of products and services. Please email your comments to feedback@ucas.ac.uk. Please let us know to which product or service your comments refer.



Published by UCAS

Graduate Teacher Training Registry (GTTR)
Rosehill
New Barn Lane
Cheltenham
Gloucestershire
GL52 3LZ
Tel: 01242 544896
Email: stats@ucas.ac.uk
Website: www.gttr.ac.uk

The GTTR is an admissions service operated by UCAS. UCAS is a company limited by guarantee registered in England number 2839815, registered charity number 1024741 (England and Wales) and SC038598 (Scotland).

UCAS Reference No: GT014007
Publication Reference: 08_013

©UCAS, 2008

CONTENTS

	Page
INSTITUTIONS RECRUITING THROUGH THE GTTR	ii-iv
TABLE A Summary of Applicants	1
TABLE A1 Summary of Applicants and Acceptances 2001-2007	1
TABLE A2 Summary of Applicants by Gender 2001-2007	1
FIGURE 1 Applicants by Gender 2001-2007	1
TABLE A3 Summary of Applicants in Extra and Clearing (No longer provided)	2
TABLE A4 Analysis of Applicants by Age and Outcome	2
FIGURE 2 Applicants by Outcome	2
TABLE B Summary of those Accepted for PGCE Courses 2005-2007	3
TABLE B1 Summary of those Accepted for Middle Years Age Range PGCE Courses 2005-2007	5
TABLE B2 Summary of those Accepted for Primary Age Range PGCE Courses 2005-2007	5
TABLE C Numbers Accepted for PGCE Courses by Subject and by Institution	6
TABLE C1 Numbers of Acceptances for each Modern Language by Institution	12
TABLE C2 Numbers of Acceptances for each Subject Conversion Course by Institution	13
TABLE D Numbers Accepted for Primary Age Range Courses by Institution	14
TABLE D1 Numbers Accepted for Middle Years Age Range Courses by Institution	16
TABLE E Classification of Applicants who were Finally Not Accepted	16
TABLE F Numbers of Applicants Placed at their Chosen Institutions	17
TABLE G Applicants Taking Examinations and Equivalency Tests	17
TABLE H Analysis of Applicants and Outcome According to Ethnic Origin	18
TABLE H1 Analysis of Applicants to Middle Years Age Range Courses According to Ethnic Origin	18
TABLE H2 Analysis of Applicants to Primary Age Range Courses According to Ethnic Origin	19
TABLE H3 Totals of Applicants by Subject, Age Range and Ethnic Origin	20
TABLE H4 Analysis of Applications and Acceptances by Institution According to Ethnic Origin of Applicants	24

KEY TO INSTITUTION CODE NAMES USED IN THE GTTR ANNUAL STATISTICAL REPORT

ABRDN	University of Aberdeen
ABWTH	Aberystwyth University
ARU	Anglia Ruskin University
BANGR	Bangor University
BASPA	Bath Spa University
BATH	University of Bath
BEC	Billericay Educational Consortium (SCITT)
BED	University of Bedfordshire
BEDS	Bournemouth and East Dorset SCITT Consortium
BFTCS	University College Birmingham
BGC	Bishop Grosseteste University College Lincoln
BIRM	The University of Birmingham
BPDES	Bournemouth, Poole and Dorset East SCITT
BRC	Bradford College
BRISL	University of Bristol
BRITN	University of Brighton
BROM	Bromley Schools' Collegiate (SCITT)
BRUNL	Brunel University
BUWE	Bristol, University of the West of England
CAM	Cambridge University (Faculty of Education)
CANCC	Canterbury Christ Church University
CEB	Birmingham City University
CEY	Cornwall Early Years (SCITT)
CHICH	University of Chichester
CHSTR	University of Chester
CITT	Cornwall School-Centred Initial Teacher Training
COLSC	Colchester Schools SCITT and DRB Consortium
CPTT	Cumbria Primary Teacher Training (SCITT)
CSSD	Central School of Speech and Drama
CTG	Chiltern Training Group
CUWIC	Cardiff, University of Wales Institute
DERBY	University of Derby
DEVON	Devon Secondary Teacher Training Group (SCITT)
DORT	Dorset Teacher Training Partnership (SCITT)
DPTTG	Devon Primary SCITT Training Group
DSAS	Durham Secondary Applied SCITT
DUND	University of Dundee
DUR	The University of Durham
EANGL	University of East Anglia
EDINB	The University of Edinburgh
EHC	Edge Hill University
ELOND	University of East London
EPSTG	Essex Primary Schools Training Group (SCITT)
EXETR	University of Exeter
FORES	Forest Independent Primary Collegiate (SCITT)
GATE	Gateshead 3-7 SCITT
GITEP	Gloucestershire Initial Teacher Education Partnership (SCITT)
GLASG	University of Glasgow
GLOS	University of Gloucestershire
GOLD	Goldsmiths (University of London)
GRAND	Grand Union Training Partnership (SCITT)

KEY TO INSTITUTION CODE NAMES USED IN THE GTTR ANNUAL STATISTICAL REPORT

GREEN	University of Greenwich
HARS	Hastings & Rother SCITT
HERTS	University of Hertfordshire
HFE	High Force Education (SCITT)
HUDDS	University of Huddersfield
HULL	The University of Hull
INEL	Institute of Education, University of London
JEPS	The Jewish Primary School Consortium (SCITT)
KCL	King's College London, University of London
KEELE	Keele University
KING	Kingston University
KMT	Kent and Medway Training (SCITT)
LAC	London Arts Consortium (SCITT)
LBRO	Loughborough University
LDBS	London Diocesan Board for Schools (SCITT)
LDSS	Leeds SCITT
LEEDS	University of Leeds
LEICR	University of Leicester
LEICS	Leicester and Leicestershire SCITT
LETAS	Leeds, Trinity and All Saints
LHOPE	Liverpool Hope University
LINS	The Learning Institute (SCITT)
LJM	Liverpool John Moores University
LMU	Leeds Metropolitan University
LONMT	London Metropolitan University
LONSB	London South Bank University
MANU	The University of Manchester
MARCH	The Marches Consortium (SCITT)
MARJ	Marjon – The College of St Mark & St John
MIDDL	Middlesbrough SCITT
MIDDX	Middlesex University
MIDES	Mid Essex SCITT Consortium
MMU	The Manchester Metropolitan University
NBEDS	The North Bedfordshire Consortium (SCITT)
NEECC	North East Essex Coastal Confederation ITT (SCITT)
NEWC	Newcastle University
NORTH	Northumbria University
NOSS	The National SCITT in Outstanding Primary Schools
NOTRE	Nottingham Trent University
NOTTM	The University of Nottingham
NPORT	Newport, University of Wales
NTON	University of Northampton
NTTP	Northampton Teacher Training Partnership
NWMAN	Newman University College
OXF	Oxford University
OXFD	Oxford Brookes University
PCP	Primary Catholic Partnership (SCITT)
PILG	Pilgrim Partnership (SCITT)
PLYM	University of Plymouth
POOLE	Borough of Poole SCITT
PORT	University of Portsmouth

KEY TO INSTITUTION CODE NAMES USED IN THE GTTR ANNUAL STATISTICAL REPORT

PPS	Portsmouth Primary SCITT
RAD	Royal Academy of Dance
READG	The University of Reading
ROE	Roehampton University
SELS	SCITT in East London Schools
SHEFD	The University of Sheffield
SHIRE	Shire Foundation (SCITT)
SHU	Sheffield Hallam University
SMART	St Martin's College, Lancaster: Ambleside: Carlisle: London
SMARY	St Mary's College
SOTON	University of Southampton
STAFF	Staffordshire University
STEP	Somerset SCITT Consortium
STRAT	The University of Strathclyde
SUND	University of Sunderland
SUSX	University of Sussex
SWIHE	Swansea Institute of Higher Education
SWIND	Swindon SCITT
SWTT	South West Teacher Training (SCITT)
TCC	Trinity College Carmarthen
TITAN	The Titan Partnership Ltd (SCITT)
TPC	The Thames Primary Consortium (SCITT)
TVU	Thames Valley University
WANDS	Wandsworth Primary Schools' Consortium (SCITT)
WARWK	The University of Warwick
WIN	University of Winchester
WEMER	West Mercia Consortium (SCITT)
WMC	West Midlands Consortium (SCITT)
WOLVN	University of Wolverhampton
WORCS	University of Worcester
YORK	The University of York
YSJ	York St John University College

TABLE A

Summary of Applicants

	Male	Female	Total
Number of acceptances	7495	17722	25217
Number of unplaced	8514	16372	24886
Number of withdrawals	1062	2766	3828
Total	17071	36860	53931

TABLE A1

Summary of Applicants and Acceptances 2001-2007

	2001	2002	2003	2004	2005	2006	2007
Acceptances	22223	24511	27459	28524	29070	26704	25217
Unplaced/withdrawn	14120	23567	28406	30484	31073	32191	28714
Total number of applicants	36343	48078	55865	59008	60143	58895	53931

TABLE A2

Summary of Applicants by Gender 2001-2007

	2001	2002	2003	2004	2005	2006	2007
Male	12906	15169	18380	19256	19822	18893	17071
Female	27989	32909	37485	39752	40321	40002	36860
Total number of applicants	40895	48078	55865	59008	60143	58895	53931

FIGURE 1

Applicants by Gender 2001-2007

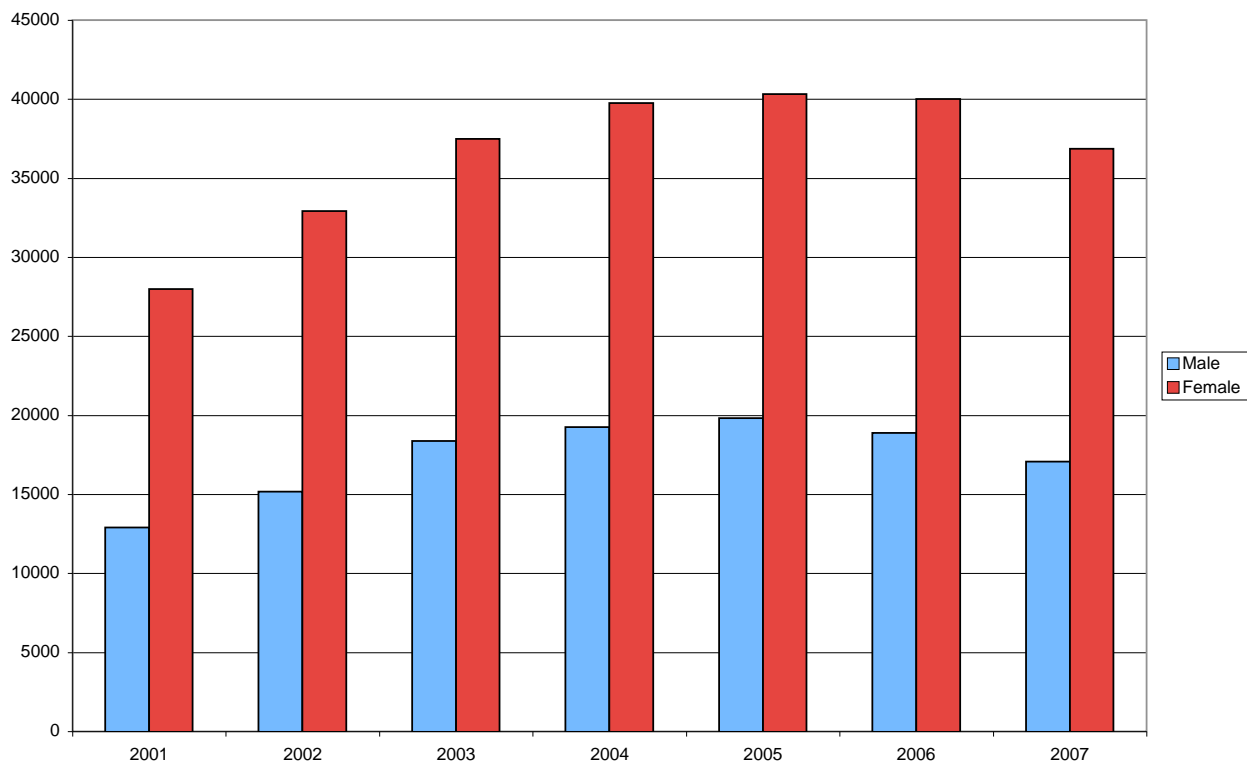


TABLE A3

Summary of Applicants in Extra and Clearing

Due to a system change we will no longer be able to produce this table. It last appeared in the 2005 Annual Statistical Report.

TABLE A4

Analysis of Applicants by Age and Outcome

Age	Acceptances		Withdrawals		Unplaced		Total	
	Male	Female	Male	Female	Male	Female	Male	Female
20-22	1714	6005	212	777	1706	4472	3632	11254
23-24	1676	4175	234	599	1750	3587	3660	8361
25-26	1031	2175	130	333	1142	2081	2303	4589
27-28	677	1296	80	232	800	1374	1557	2902
29-30	466	733	74	138	521	898	1061	1769
31-35	706	1163	103	241	962	1475	1771	2879
36-40	541	997	97	181	674	1180	1312	2358
41-45	338	750	57	157	480	818	875	1725
46-50	214	347	46	82	296	371	556	800
51 and over	132	81	29	26	183	116	344	223
Total	7495	17722	1062	2766	8514	16372	17071	36860

FIGURE 2

Applicants by Outcome

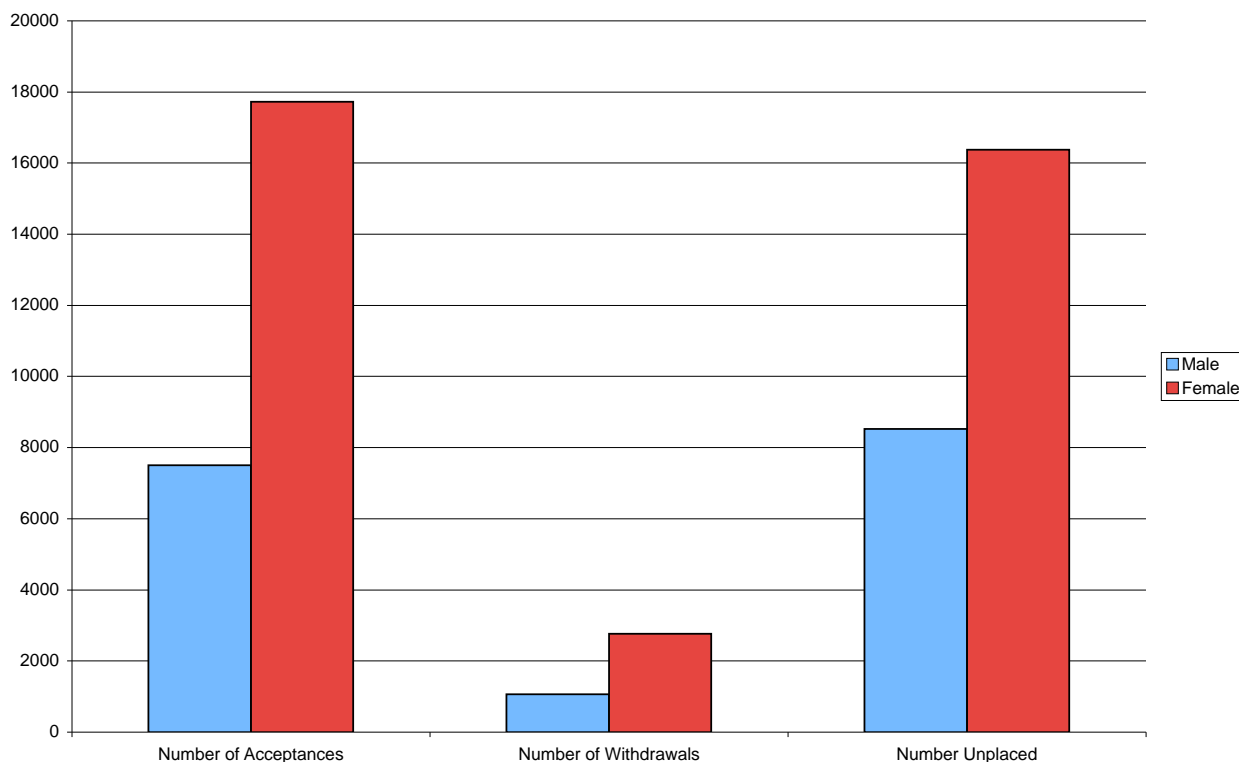


TABLE B

Summary of those Accepted for PGCE Courses 2005-2007

Courses		Acceptances	2005	2006	2007
Arts	Art	Male	214	171	141
		Female	772	647	542
	Drama	Male	74	66	53
		Female	367	314	268
	History	Male	426	326	331
		Female	583	482	433
	Music	Male	221	217	233
		Female	364	332	354
	Religious Education	Male	232	260	262
		Female	471	517	533
Arts Total	Male	1167	1040	1020	
	Female	2557	2292	2130	
	Total	3724	3332	3150	
Languages	Classics	Male	11	10	8
		Female	20	17	23
	English	Male	491	469	395
		Female	1753	1663	1532
	Community Languages	Male	8	3	4
		Female	22	13	22
	French	Male	177	132	137
		Female	557	486	457
	German	Male	41	31	35
		Female	174	138	121
	Italian	Male	-	-	-
		Female	1	-	1
	Japanese	Male	1	2	-
		Female	-	3	-
	Modern Foreign Language	Male	94	74	76
		Female	322	313	288
	Russian	Male	1	1	-
		Female	1	1	1
	Spanish	Male	32	41	35
		Female	150	146	145
	Urdu	Male	3	2	2
		Female	2	3	4
	Welsh	Male	11	6	4
		Female	38	37	25
	Languages Total	Male	873	771	696
		Female	3041	2820	2619
Total		3914	3591	3315	
Specialist Subjects	Adult Education	Male	113	88	76
		Female	184	175	144
	Design Technology	Male	363	312	267
		Female	411	422	438
	Home Economics	Male	7	9	8
		Female	92	110	108
	Physical Education	Male	625	491	504
		Female	520	450	437
	Specialist Subjects Total	Male	1108	900	855
		Female	1207	1157	1127
Total		2315	2057	1982	

Continued overleaf

TABLE B continued

Courses		Acceptances	2005	2006	2007
Sciences	Biology	Male	326	269	255
		Female	629	628	626
	Chemistry	Male	255	224	216
		Female	312	327	287
	Combined Science	Male	438	415	438
		Female	607	583	591
	Environmental Science	Male	2	2	3
		Female	3	2	-
	Geology	Male	9	1	3
		Female	5	3	5
	Information Technology	Male	604	504	502
		Female	377	340	270
	Mathematics	Male	1107	943	872
		Female	959	892	773
	Physics	Male	315	258	247
		Female	107	100	106
Sciences Total		Male	3056	2616	2064
		Female	2999	2875	2658
		Total	6055	5491	5194
Social Sciences	Business Studies	Male	310	262	262
		Female	407	373	355
	Citizenship	Male	76	82	74
		Female	145	129	146
	Economics	Male	29	29	12
		Female	19	18	13
	Geography	Male	414	382	275
		Female	592	496	466
	Modern Studies	Male	18	14	23
		Female	28	32	24
	Social Studies	Male	36	18	20
		Female	130	101	83
Social Sciences Total		Male	883	787	666
		Female	1321	1149	1087
		Total	2204	1936	1753
Primary		Male	1609	1618	1631
		Female	8796	8319	7840
		Total	10405	9937	9471
Middle		Male	152	106	91
		Female	301	254	261
		Total	453	360	352
Total		Male	8848	7838	7023
		Female	20222	18866	17722
Grand Total		Total	29070	26704	25217
Target allocations for 2007 entry					
		England	Scotland	Wales	Totals
Primary - including Middle Years		8549	1505	430	10484
Secondary		16756	1210	1097	19063
Totals		25305	2715	1527	29547

Sources: Training and Development Agency for Schools (England)
Welsh Assembly Government (Wales)
Scottish Funding Council (Scotland)

TABLE B1

Summary of those Accepted for Middle Years Age Range PGCE Courses 2005-2007

Course	Acceptances	2005	2006	2007
Middle	Male	2	2	4
(7-14 years KS2 & 3)	Female	8	12	13
	Total	10	14	17
Middle named subject	Male	148	104	87
(7-14 years KS2 & 3)	Female	293	242	248
	Total	441	346	335
Grand Total		451	360	352

TABLE B2

Summary of those Accepted for Primary Age Range PGCE Courses 2005-2007

Course	Acceptances	2005	2006	2007
Lower Primary	Male	108	92	107
(3/5-8 years KS1)	Female	1575	1499	1486
	Total	1683	1591	1593
Lower Primary named subject	Male	3	4	7
(3/5-8 years KS1)	Female	63	66	52
	Total	66	70	59
Primary	Male	1228	1210	1201
(3/5-11 years KS1 & 2)	Female	5938	5576	5250
	Total	7166	6786	6451
Primary named subject	Male	38	46	40
(3/5-11 years KS1 & 2)	Female	269	319	273
	Total	307	365	313
Upper Primary	Male	155	190	216
(7-11 years KS2)	Female	573	530	488
	Total	728	720	704
Upper Primary named subject	Male	63	75	60
(7-11 years KS2)	Female	278	316	291
	Total	341	391	351
Total	Male	1595	1617	1631
	Female	8696	8306	7840
Grand Total		10291	9923	9471

KS = Key Stage

TABLE C

Numbers Accepted for PGCE Courses by Subject and by Institution

Institution	Arts					Languages				Specialist Subjects			
	ART	DRAMA	HISTORY	MUSIC*	RE	CLASSICS	ENGLISH	MODERN LANGUAGES*	WELSH	ADULT EDUCATION	DESIGN TECHNOLOGY*	HOME ECONOMICS	PHYSICAL EDUCATION
ABRDN	-	12	14	-	11	-	40	18	2	-	7	9	-
ABWTH	-	18	15	-	-	-	15	12	2	-	-	-	-
ARU	14	-	15	-	-	-	18	15	-	-	-	-	-
BANGR	16	-	-	13	13	-	24	9	4	-	-	-	41
BASPA	11	-	11	21	22	-	21	5	-	-	14	-	21
BATH	-	-	12	-	-	-	20	15	-	-	-	-	14
BEC	-	-	-	-	-	-	-	-	-	-	-	-	-
BED	-	12	-	-	-	-	15	6	-	-	-	-	56
BEDS	-	-	-	-	-	-	-	-	-	-	-	-	-
BFTCS	-	-	-	-	-	-	-	-	-	-	-	-	-
BGC	-	-	-	8	10	-	17	-	-	-	-	-	-
BIRM	-	-	21	-	24	-	24	27	-	-	-	-	21
BPDES	-	-	-	-	-	-	-	4	-	-	5	-	-
BRC	-	-	-	-	-	-	-	2	-	-	-	4	-
BRISL	-	-	19	18	11	-	35	41	-	-	-	-	-
BRITN	26	15	-	-	26	-	20	11	-	-	23	-	21
BROM	-	-	2	-	3	-	5	5	-	-	-	-	-
BRUNL	-	-	-	-	-	-	25	-	-	-	-	-	24
BUWE	18	-	17	-	-	-	25	14	-	30	31	-	-
CAM	17	-	20	20	20	15	39	18	-	-	9	-	-
CANCC	18	-	28	8	15	-	35	18	-	-	9	1	21
CEB	43	19	-	43	-	-	-	-	-	56	14	-	-
CEY	-	-	-	-	-	-	-	-	-	-	-	-	-
CHICH	-	-	14	-	10	-	14	-	-	-	10	-	16
CHSTR	13	15	-	-	32	-	-	22	-	-	-	-	16
CITT	-	-	-	2	-	-	6	1	-	-	2	-	-
COLSC	-	-	-	-	-	-	5	2	-	-	4	-	6
CPTT	-	-	-	-	-	-	-	-	-	-	-	-	-
CSSD	-	29	-	-	-	-	13	-	-	-	-	-	-
CTG	2	-	-	2	2	-	2	-	-	-	5	-	4
CUWIC	41	-	13	22	-	-	23	32	13	-	25	-	63
DERBY	-	-	-	-	-	-	-	-	-	23	-	-	-
DEVON	-	10	-	4	-	-	-	1	-	-	-	-	-
DORT	-	-	-	-	-	-	-	-	-	-	-	-	-
DPTTG	-	-	-	-	-	-	-	-	-	-	-	-	-
DSAS	6	-	-	-	-	-	-	-	-	-	-	-	-
DUND	-	-	-	-	-	-	4	5	-	-	-	5	-
DUR	-	-	17	20	14	-	43	17	-	-	-	-	19
EANGL	-	-	21	-	12	-	25	12	-	-	-	-	21
EDINB	14	9	10	20	10	-	33	22	-	-	10	-	19
EHC	20	-	24	14	43	-	72	24	-	-	43	-	29
ELOND	-	-	-	10	15	-	17	13	-	-	17	-	18
EPSTG	-	-	-	-	-	-	-	-	-	-	-	-	-
EXETR	17	10	27	-	22	-	57	35	-	-	26	-	64
FORES	-	-	-	-	-	-	-	-	-	-	-	-	-
GATE	-	-	-	-	-	-	-	-	-	-	-	-	-
GITEP	-	-	-	5	-	-	-	-	-	-	6	-	-
GLASG	14	-	15	-	12	-	37	25	-	-	-	-	-
GLOS	11	-	9	-	14	-	20	9	-	-	-	-	12
GOLD	37	18	-	23	-	-	31	36	-	-	28	-	-
GRAND	-	-	-	-	-	-	-	-	-	-	-	-	-
GREEN	12	-	-	13	-	-	-	-	-	-	6	-	25
HARS	-	-	-	-	-	-	-	-	-	-	-	-	-
HERTS	10	-	-	-	-	-	25	8	-	-	-	-	-
HFE	-	-	-	-	-	-	-	-	-	-	-	-	-
HUDDS	-	-	11	39	-	-	-	-	-	-	19	-	-
HULL	-	-	10	-	14	-	14	10	-	-	-	-	-
INEL	62	-	66	34	28	-	122	58	-	-	-	-	-
JEPS	-	-	-	-	-	-	-	-	-	-	-	-	-
KCL	-	-	-	-	24	16	26	26	-	-	-	-	-
KEELE	-	-	-	-	-	-	-	-	-	-	-	-	-
KING	-	-	-	-	-	-	-	21	-	-	-	-	-
KMT	-	-	-	-	-	-	-	-	-	-	-	-	-
LAC	4	3	-	4	-	-	-	-	-	-	-	-	-

Sciences

Social Sciences

BIOLOGY	CHEMISTRY	COMBINED SCIENCE*	ENVIRONMENTAL SCIENCE	GEOLOGY	INFO TECHNOLOGY*	MATHEMATICS*	PHYSICS	BUSINESS STUDIES*	CITIZENSHIP	ECONOMICS	GEOGRAPHY	MODERN STUDIES	SOCIAL STUDIES	PRIMARY	MIDDLE*	TOTALS
16	9	-	-	-	10	24	8	14	-	-	12	10	-	159	-	375
13	2	-	-	-	-	-	6	-	-	-	16	-	-	105	-	204
-	-	21	-	-	14	8	-	-	-	-	-	-	-	50	-	155
25	11	-	-	-	7	18	6	-	-	-	-	-	-	58	-	245
-	-	26	-	-	13	12	-	-	-	-	10	-	-	235	58	480
16	12	-	3	3	12	13	7	-	-	-	8	-	-	-	26	161
-	-	-	-	-	-	-	-	-	-	-	-	-	-	21	-	21
-	-	14	-	-	14	8	-	21	-	-	7	-	-	82	17	252
-	-	-	-	-	-	-	-	-	-	-	-	-	-	24	-	24
-	-	-	-	-	-	-	-	-	-	-	-	-	-	25	-	25
-	-	16	-	-	-	10	-	-	-	-	-	-	-	94	-	155
16	17	-	-	-	-	32	10	-	-	-	23	-	-	87	-	302
-	-	7	-	-	-	4	-	-	-	-	-	-	-	-	-	20
-	-	34	-	-	18	4	-	7	17	-	4	-	10	83	4	187
27	16	-	-	-	-	29	16	-	20	-	19	-	-	-	-	251
-	-	14	-	-	21	50	-	15	-	-	13	-	-	106	-	361
-	-	5	-	-	2	5	-	-	-	-	-	-	-	-	-	27
2	-	14	-	-	21	18	-	-	-	-	-	-	-	168	-	272
16	-	-	-	-	-	22	-	27	-	-	12	-	-	92	-	304
25	24	-	-	-	-	15	13	-	-	-	21	-	-	167	57	480
-	-	40	-	-	19	23	-	15	33	-	29	-	-	182	54	548
-	-	-	-	-	-	23	-	-	-	-	-	-	-	91	-	289
-	-	-	-	-	-	-	-	-	-	-	-	-	-	24	-	24
-	-	10	-	-	3	17	-	-	-	-	-	-	-	95	11	200
-	-	32	-	-	-	20	-	-	-	-	-	-	-	43	-	193
-	-	4	-	-	1	2	-	-	-	-	-	-	-	-	-	18
-	-	7	-	-	3	4	-	-	-	-	-	-	-	-	-	31
-	-	-	-	-	-	-	-	-	-	-	-	-	-	24	-	24
-	-	-	-	-	-	-	-	-	-	-	-	-	-	-	-	42
-	-	7	-	-	2	2	-	2	-	-	2	-	-	-	-	32
-	-	48	-	-	-	25	-	-	-	-	-	-	-	80	-	385
-	-	-	-	-	-	-	-	-	-	-	-	-	-	67	-	90
-	-	-	-	-	-	-	-	-	-	-	-	-	-	-	-	15
-	-	-	-	-	-	-	-	-	-	-	-	-	-	22	-	22
-	-	-	-	-	-	-	-	-	-	-	-	-	-	28	-	28
-	-	8	-	-	5	-	-	-	-	-	4	-	5	-	-	28
-	5	-	-	-	-	5	4	-	-	-	-	-	-	152	-	180
21	16	-	-	-	-	21	10	-	-	-	15	-	-	78	-	291
20	7	-	-	-	-	17	8	1	-	-	19	-	-	175	-	338
10	12	-	-	-	-	30	9	-	-	-	13	-	-	275	-	496
-	-	97	-	-	43	38	-	52	-	-	21	-	-	80	-	600
-	-	27	-	-	17	23	-	-	-	-	-	-	-	213	4	374
-	-	-	-	-	-	-	-	-	-	-	-	-	-	17	-	17
36	12	-	-	-	18	30	12	-	15	-	31	-	-	133	-	545
-	-	-	-	-	-	-	-	-	-	-	-	-	-	17	-	17
-	-	-	-	-	-	-	-	-	-	-	-	-	-	28	-	28
-	-	-	-	-	8	-	-	7	-	-	4	-	-	-	-	30
15	7	-	-	-	10	31	8	11	-	-	11	14	-	255	-	465
-	-	14	-	-	-	11	-	-	-	-	11	-	-	149	-	260
13	8	19	-	-	-	10	3	-	-	-	7	-	-	193	-	426
-	-	-	-	-	-	-	-	-	-	-	-	-	-	-	-	-
-	-	9	-	-	20	20	-	-	-	-	-	-	-	91	-	196
-	-	1	-	-	-	-	-	-	-	-	-	-	-	-	-	1
-	-	14	-	-	-	13	-	12	-	-	-	-	-	173	-	255
-	-	-	-	-	-	-	-	-	-	-	-	-	-	26	-	26
9	10	-	-	-	28	6	1	23	-	-	-	-	-	-	-	146
20	11	-	-	-	-	24	2	11	-	-	7	-	-	141	-	264
28	21	29	-	-	20	50	11	52	19	-	48	-	28	248	-	924
-	-	-	-	-	-	-	-	-	-	-	-	-	-	15	-	15
40	13	-	-	-	23	24	10	-	-	-	-	-	-	-	-	202
5	11	6	-	5	10	-	16	-	-	-	5	-	10	-	-	68
16	4	-	-	-	-	19	5	15	-	-	-	-	-	129	-	209
-	-	-	-	-	-	-	-	-	-	-	-	-	-	-	-	-
-	-	-	-	-	-	-	-	-	-	-	-	-	-	-	-	11

* includes Subject Conversion

Continued overleaf

TABLE C continued

Institution	Arts					Languages				Specialist Subjects			
	ART	DRAMA	HISTORY	MUSIC*	RE	CLASSICS	ENGLISH	MODERN LANGUAGES*	WELSH	ADULT EDUCATION	DESIGN TECHNOLOGY*	HOME ECONOMICS	PHYSICAL EDUCATION
LBRO	-	-	-	-	-	-	-	-	-	-	27	-	62
LDBS	-	-	-	-	-	-	-	-	-	-	-	-	-
LDSS	-	-	-	-	-	-	-	-	-	-	-	-	-
LEEDS	-	-	-	-	-	-	62	32	-	-	-	-	-
LEICR	-	-	14	-	-	-	46	13	-	-	-	-	-
LEICS	-	-	-	-	-	-	-	-	-	-	-	-	-
LETAS	-	-	29	6	42	-	23	33	-	-	7	-	-
LHOPE	-	20	18	25	34	-	26	28	-	-	-	-	28
LINS	-	-	-	-	-	-	4	1	-	-	-	-	-
LJM	28	6	-	-	-	-	-	26	-	-	13	4	58
LMU	-	-	-	-	-	-	-	-	-	-	-	-	20
LONMT	-	-	-	21	-	-	31	24	-	-	-	-	16
LONSB	-	-	-	-	-	-	-	-	-	-	-	-	-
MANU	-	-	-	-	-	-	26	28	-	-	12	-	-
MARCH	-	-	4	2	5	-	-	1	-	-	3	-	8
MARJ	12	-	-	-	15	-	16	24	-	-	-	-	19
MIDDL	-	-	-	-	-	-	-	-	-	-	-	-	-
MIDDX	25	26	-	16	-	-	16	16	-	-	24	-	21
MIDES	3	-	-	-	-	-	4	2	-	-	-	-	-
MMU	44	19	21	62	30	-	72	38	-	-	15	35	-
NBEDS	3	-	5	-	-	-	5	-	-	-	-	-	-
NEECC	-	-	-	-	-	-	4	-	-	-	-	-	-
NEWC	-	-	16	-	15	-	24	22	-	-	-	-	-
NORTH	18	-	-	-	-	-	-	-	-	-	19	-	22
NOSS	-	-	-	-	-	-	-	-	-	-	-	-	-
NOTRE	-	-	-	19	-	-	18	-	-	-	36	-	-
NOTTM	-	-	17	-	-	-	42	27	-	-	-	-	-
NPORT	-	-	-	-	-	-	-	-	-	58	21	-	-
NTON	-	-	-	-	-	-	-	-	-	-	-	-	-
NTPP	-	-	-	-	-	-	3	-	-	-	5	-	-
NWMAN	-	-	-	-	16	-	17	17	-	-	-	-	19
OXF	-	-	19	-	18	-	25	25	-	-	-	-	-
OXFD	12	-	-	17	26	-	17	10	-	21	-	-	-
PCP	-	-	-	-	-	-	-	-	-	-	-	-	-
PILG	-	-	-	-	-	-	-	-	-	-	-	-	-
PLYM	13	13	-	4	-	-	10	-	-	-	-	-	-
POOLE	-	-	-	-	-	-	-	-	-	-	-	-	-
PORT	-	-	-	-	-	-	26	19	-	-	-	-	-
PPS	-	-	-	-	-	-	-	-	-	-	-	-	-
RAD	-	21	-	-	-	-	-	-	-	-	-	-	-
READG	14	14	12	6	-	-	17	16	-	-	-	-	10
ROE	17	-	27	20	25	-	33	11	-	-	21	-	-
SELS	-	-	-	-	-	-	-	-	-	-	-	-	-
SHEFD	-	-	10	-	-	-	28	38	-	-	-	-	-
SHIRE	-	-	-	-	-	-	-	-	-	-	-	-	-
SHU	-	-	-	-	17	-	28	16	-	22	56	20	20
SMART	26	-	31	15	31	-	31	69	-	-	-	-	-
SMARY	-	-	-	-	20	-	-	16	-	-	-	-	8
SOTON	-	-	12	15	19	-	25	19	-	-	-	-	23
STAFF	-	-	-	-	-	-	-	-	-	-	14	-	-
STEP	-	-	-	-	-	-	-	-	-	-	-	-	-
STRAT	21	14	20	-	16	-	98	41	2	-	26	38	21
SUND	-	-	-	-	-	-	8	-	-	-	40	-	-
SUSX	-	-	10	16	-	-	21	13	-	-	-	-	-
SWIHE	21	-	39	-	-	-	49	28	6	-	19	-	-
SWIND	-	-	-	-	-	-	6	-	-	-	5	-	-
SWTT	-	-	-	-	-	-	-	-	-	-	-	-	-
TCC	-	-	-	-	29	-	-	-	-	-	-	-	-
TITAN	-	-	-	-	-	-	-	-	-	-	-	-	1
TPC	-	-	-	-	-	-	-	-	-	-	-	-	-
TVU	-	-	-	-	-	-	-	-	-	10	-	-	-
WANDS	-	-	-	-	-	-	-	-	-	-	-	-	-
WARWK	-	18	14	-	15	-	34	24	-	-	-	-	-
WEMER	-	-	-	-	-	-	-	-	-	-	-	-	-

Sciences

Social Sciences

BIOLOGY	CHEMISTRY	COMBINED SCIENCE*	ENVIRONMENTAL SCIENCE	GEOLOGY	INFO TECHNOLOGY*	MATHEMATICS*	PHYSICS	BUSINESS STUDIES*	CITIZENSHIP	ECONOMICS	GEOGRAPHY	MODERN STUDIES	SOCIAL STUDIES	PRIMARY	MIDDLE*	TOTALS
14	8	-	-	-	-	-	17	-	-	-	-	-	-	-	-	128
-	-	-	-	-	-	-	-	-	-	-	-	-	-	8	-	8
-	-	-	-	-	-	-	-	-	-	-	-	-	-	-	-	-
42	41	-	-	-	-	40	18	-	-	-	31	-	-	122	-	388
16	8	13	-	-	-	14	5	-	16	-	11	-	12	118	-	286
-	-	6	-	-	-	-	-	-	-	-	-	-	-	26	-	26
-	-	6	-	-	8	13	-	29	-	-	-	-	-	-	-	196
-	-	39	-	-	33	39	-	-	-	-	19	-	-	232	-	541
-	-	6	-	-	-	2	-	2	-	-	-	-	4	-	-	19
33	13	7	-	-	31	-	8	-	-	-	18	-	-	21	20	286
-	-	-	-	-	-	-	-	-	-	-	-	-	-	35	-	55
-	-	12	-	-	-	19	-	-	25	-	-	-	-	139	17	304
-	-	-	-	-	-	13	-	-	-	-	-	-	-	205	-	218
33	27	-	-	-	-	37	10	25	-	-	-	-	-	104	-	302
-	-	9	-	-	4	5	-	-	9	-	4	-	-	-	-	54
-	-	29	-	-	6	19	-	-	-	-	12	-	-	70	-	222
-	-	7	-	-	4	4	-	-	-	-	-	-	-	-	-	15
-	-	23	-	-	43	22	-	19	16	-	11	-	-	85	-	363
-	-	3	-	-	-	3	-	-	-	-	3	-	-	-	-	18
69	24	-	-	-	-	58	12	18	-	-	39	-	19	185	-	760
-	-	6	-	-	-	2	-	-	-	-	3	-	-	-	-	24
-	-	-	-	-	2	-	-	-	-	-	-	-	-	-	-	6
19	10	-	-	-	-	26	12	-	-	-	16	-	-	86	-	246
-	-	-	-	-	-	-	-	-	-	-	-	-	10	158	-	227
-	-	-	-	-	-	-	-	-	-	-	-	-	-	79	-	79
19	7	16	-	-	27	25	3	17	-	-	-	-	-	64	-	251
50	15	-	-	-	-	37	9	-	-	-	23	-	-	-	-	220
-	-	-	-	-	13	-	-	-	-	-	-	-	-	34	-	126
-	-	-	-	-	-	-	-	-	-	-	-	-	-	65	-	65
-	-	1	-	-	-	2	-	-	-	-	-	-	-	-	-	11
-	-	-	-	-	-	-	-	-	17	-	-	-	-	106	58	250
17	14	-	-	-	-	29	14	-	-	-	22	-	-	-	-	183
-	-	39	-	-	-	28	-	-	-	-	12	-	-	261	-	443
-	-	-	-	-	-	-	-	-	-	-	-	-	-	1	-	1
-	-	-	-	-	-	-	-	-	-	-	-	-	-	26	-	26
-	-	-	-	-	-	9	-	-	12	-	4	-	-	65	-	130
-	-	-	-	-	-	-	-	-	-	-	-	-	-	17	-	17
-	-	31	-	-	-	16	-	7	-	-	10	-	-	-	-	109
-	-	-	-	-	-	-	-	-	-	-	-	-	-	25	-	25
-	-	-	-	-	-	-	-	-	-	-	-	-	-	-	-	21
13	9	-	-	-	10	17	3	-	-	-	-	-	-	50	-	191
9	6	6	-	-	-	13	2	17	-	-	-	-	-	233	-	440
-	-	-	-	-	-	-	-	-	-	-	-	-	-	35	-	35
-	-	36	-	-	-	21	-	-	-	-	18	-	-	-	-	151
-	-	-	-	-	-	-	-	-	-	-	-	-	-	14	-	14
-	-	61	-	-	40	30	-	50	13	-	-	-	-	100	-	473
15	7	5	-	-	19	24	10	-	8	-	19	-	-	428	-	738
-	-	25	-	-	17	32	-	12	-	-	12	-	5	167	-	314
42	11	-	-	-	19	28	7	-	-	-	14	-	-	139	-	373
-	-	-	-	-	-	-	-	20	-	3	-	-	-	-	-	37
-	-	-	-	-	-	-	-	-	-	-	-	-	-	15	-	15
21	24	-	-	-	28	79	21	23	-	-	28	23	-	425	-	969
-	-	36	-	-	38	18	-	39	-	-	9	-	-	28	-	216
-	-	45	-	-	-	23	-	-	-	-	9	-	-	-	26	163
15	17	6	-	-	23	45	12	20	-	-	22	-	-	87	-	409
-	-	5	-	-	5	3	-	-	-	-	-	-	-	-	-	24
-	-	1	-	-	-	-	-	-	-	-	-	-	-	-	-	1
-	-	-	-	-	-	-	-	-	-	-	-	-	-	69	-	98
-	-	4	-	-	-	-	-	-	-	-	-	-	-	-	-	5
-	-	-	-	-	-	-	-	-	-	-	-	-	-	5	-	5
-	-	-	-	-	-	-	-	-	-	-	-	-	-	-	-	10
-	-	-	-	-	-	-	-	-	-	-	-	-	-	24	-	24
25	8	-	-	-	17	25	10	22	-	4	-	-	-	149	-	365
-	-	-	-	-	-	-	-	-	-	-	-	-	-	13	-	13

*includes Subject Conversion

Continued overleaf

TABLE C continued

Institution	Arts					Languages				Specialist Subjects			
	ART	DRAMA	HISTORY	MUSIC*	RE	CLASSICS	ENGLISH	MODERN LANGUAGES*	WELSH	ADULT EDUCATION	DESIGN TECHNOLOGY*	HOME ECONOMICS	PHYSICAL EDUCATION
WIN	-	-	-	-	-	-	-	-	-	-	-	-	-
WMC	-	-	-	-	-	-	-	-	-	-	2	-	1
WOLVN	-	-	-	-	-	-	16	12	-	-	10	-	26
WORCS	-	-	20	-	-	-	28	16	-	-	17	-	27
YORK	-	-	15	-	-	-	21	24	-	-	-	-	-
YSJ	-	-	-	-	15	-	-	-	-	-	-	-	-
Total	683	321	764	587	795	31	1927	1328	29	220	705	116	941

Sciences								Social Sciences								
BIOLOGY	CHEMISTRY	COMBINED SCIENCE*	ENVIRONMENTAL SCIENCE	GEOLOGY	INFO TECHNOLOGY*	MATHEMATICS*	PHYSICS	BUSINESS STUDIES*	CITIZENSHIP	ECONOMICS	GEOGRAPHY	MODERN STUDIES	SOCIAL STUDIES	PRIMARY	MIDDLE*	TOTALS
-	-	-	-	-	-	-	-	-	-	-	-	-	-	50	-	50
-	-	-	-	-	2	-	-	-	-	-	-	-	-	-	-	5
-	-	29	-	-	21	28	-	12	-	-	-	-	-	65	-	219
17	8	-	-	-	-	13	7	-	-	18	-	-	-	108	-	279
23	18	-	-	-	-	24	8	-	-	-	-	-	-	-	-	133
-	-	-	-	-	-	-	-	-	-	-	-	-	-	130	-	145
881	503	1029	3	8	772	1645	353	617	220	25	741	47	103	9471	352	25217

*includes Subject Conversion

Numbers of Acceptances for each Modern Language by Institution

(The numbers shown below are included in the Modern Languages column of Table C.)

Institution	FRENCH	GERMAN	ITALIAN	JAPANESE	MANDARIN	RUSSIAN	SPANISH	URDU	TOTAL
ABRDN	13	5	-	-	-	-	-	-	18
ABWTH	8	2	-	-	-	-	2	-	12
BANGR	7	2	-	-	-	-	-	-	9
BIRM	14	7	-	-	-	-	6	-	27
BRISL	30	2	-	-	-	-	3	-	35
CANCC	7	-	-	-	-	-	-	-	7
CHSTR	14	3	-	-	-	-	5	-	22
DEVON	-	-	-	-	-	-	1	-	1
DUND	2	1	-	-	-	-	2	-	5
DUR	10	5	-	-	-	-	2	-	17
EDINB	12	4	-	-	-	-	-	-	16
EHC	14	2	-	-	-	-	8	-	24
ELOND	3	2	1	-	-	-	-	-	6
EXETR	12	9	-	-	-	-	-	-	21
GLASG	25	-	-	-	-	-	-	-	25
GOLD	11	3	-	-	-	-	10	-	24
HERTS	8	-	-	-	-	-	-	-	8
HULL	1	2	-	-	-	-	7	-	10
INEL	40	3	-	-	-	-	15	-	58
KCL	17	3	-	-	-	-	6	-	26
KING	13	3	-	-	-	-	5	-	21
LEEDS	18	8	-	-	-	-	6	-	32
LEICR	13	-	-	-	-	-	-	-	13
LETAS	12	4	-	-	-	-	11	6	33
LHOPE	13	3	-	-	-	-	12	-	28
LJM	14	3	-	-	-	-	9	-	26
MANU	20	4	-	-	-	-	4	-	28
MMU	18	7	-	-	-	-	13	-	38
NEWC	16	3	-	-	-	-	3	-	22
NOTTM	18	5	-	-	-	1	3	-	27
OXF	19	6	-	-	-	-	-	-	25
PORT	12	2	-	-	-	-	5	-	19
READG	10	4	-	-	-	-	2	-	16
SHEFD	12	10	-	-	-	-	15	-	37
SMART	47	18	-	-	-	-	4	-	69
SOTON	14	2	-	-	-	-	3	-	19
STRAT	23	9	-	-	-	-	9	-	41
SWIHE	23	1	-	-	-	-	4	-	28
WARWK	12	4	-	-	-	-	5	-	21
YORK	19	5	-	-	-	-	-	-	24
TOTAL	594	156	1	-	-	1	180	6	938

MODERN LANGUAGES

The modern language figures given in Table C include students taking combined courses, and those taking French, German, Italian, Japanese, Russian, Spanish and Urdu as a single subject. A breakdown of the actual numbers of students taking a single main Modern Language is given above. As the above figures only include students taking a single main language, they do not indicate the overall number of students training to teach Modern Languages.

TABLE C2

Numbers of Acceptances for each Subject Conversion Course by Institution

Institution	INFORMATION TECHNOLOGY	MIDDLE NAMED SUBJECT	MATHEMATICS	MODERN LANGUAGES	COMBINED SCIENCE	DESIGN TECHNOLOGY	MUSIC	GEOGRAPHY	BUSINESS STUDIES	GRAND TOTAL
BASPA	8	29	-	-	-	-	-	-	-	37
BIRM	-	-	15	-	-	-	-	-	-	15
BRISL	-	-	-	15	-	-	-	-	-	15
BRITN	1	-	15	-	4	3	-	-	-	23
CHSTR	-	-	-	4	-	-	-	-	-	4
GLASG	-	-	-	6	-	-	-	-	-	6
GREEN	-	-	-	-	-	1	-	-	-	1
HERTS	-	-	-	4	-	-	-	-	-	4
INEL	-	-	-	10	-	-	-	-	-	10
KCL	-	-	-	12	-	-	-	-	-	12
KEELE	1	-	-	-	6	-	-	-	-	7
LHOPE	-	-	-	8	-	-	-	-	-	8
LJM	11	-	-	4	-	-	-	-	-	15
LONMT	-	-	-	-	-	-	6	-	-	6
MARJ	-	-	1	-	-	-	-	-	-	1
MIDDX	-	-	-	-	-	3	-	-	-	3
MMU	-	-	20	-	-	5	-	-	-	25
NEWC	-	-	-	5	-	-	-	-	-	5
NOTRE	-	-	4	-	13	-	-	-	-	17
NOTTM	-	-	-	2	-	-	-	-	-	2
OXF	-	-	-	5	-	-	-	-	-	5
PORT	-	-	-	6	-	-	-	-	-	6
READG	-	-	-	2	-	-	-	-	-	2
SHEFD	-	-	-	2	-	-	-	-	-	2
SHU	-	-	13	-	18	7	-	-	-	38
SMART	4	-	10	7	5	-	-	-	-	26
SUND	8	-	5	-	19	18	-	-	6	56
SWIHE	-	-	-	3	-	-	-	-	-	3
WARWK	-	-	-	1	-	-	-	-	-	1
YORK	-	-	-	4	-	-	-	-	-	4
TOTAL	33	29	83	100	65	37	6	-	6	359

TABLE D

Numbers Accepted for Primary Age Range Courses by Institution

Institution	Male							Female							Grand Total
	LPR	LPRS	PR	PRS	UPR	UPRS	Total	LPR	LPRS	PR	PRS	UPR	UPRS	Total	
ABRDN	-	-	19	-	-	-	19	-	-	140	-	-	-	140	159
ABWTH	3	-	-	-	31	-	34	28	-	-	-	43	-	71	105
ARU	-	-	9	-	-	-	9	-	-	41	-	-	-	41	50
BANGR	-	-	-	-	11	-	11	27	-	-	-	20	-	47	58
BASPA	3	-	22	-	-	-	25	73	-	137	-	-	-	210	235
BEC	-	-	-	-	6	-	6	8	-	-	-	7	-	15	21
BED	-	-	10	-	-	-	10	-	-	72	-	-	-	72	82
BEDS	1	-	-	-	-	-	1	23	-	-	-	-	-	23	24
BFTCS	1	-	-	-	-	-	1	24	-	-	-	-	-	24	25
BGC	-	-	15	-	-	-	15	-	-	79	-	-	-	79	94
BIRM	-	-	13	-	-	-	13	27	-	47	-	-	-	74	87
BRC	8	-	-	2	10	-	20	25	-	-	8	30	-	63	83
BRITN	-	-	18	-	-	-	18	4	-	84	-	-	-	88	106
BRUNL	-	-	24	-	-	-	24	-	-	144	-	-	-	144	168
BUWE	6	-	11	4	-	-	21	33	-	19	19	-	-	71	92
CAM	3	-	17	-	-	-	20	46	-	101	-	-	-	147	167
CANCC	3	-	-	-	20	10	33	58	-	-	-	44	47	149	182
CEB	1	-	13	-	-	-	14	25	-	52	-	-	-	77	91
CEY	1	-	-	-	-	-	1	23	-	-	-	-	-	23	24
CHICH	-	-	15	-	-	-	15	12	-	68	-	-	-	80	95
CHSTR	-	-	11	-	-	-	11	16	-	16	-	-	-	32	43
CPTT	-	-	10	-	-	-	10	-	-	14	-	-	-	14	24
CUWIC	-	-	8	-	-	-	8	-	-	72	-	-	-	72	80
DERBY	-	-	-	-	6	-	6	34	-	-	6	21	-	61	67
DORT	-	-	6	-	-	-	6	-	-	16	-	-	-	16	22
DPTTG	-	-	4	-	-	-	4	-	-	24	-	-	-	24	28
DUND	-	-	29	-	-	-	29	-	-	123	-	-	-	123	152
DUR	-	-	12	1	-	-	13	-	-	56	9	-	-	65	78
EANGL	6	-	14	2	7	-	29	55	-	43	21	27	-	146	175
EDINB	-	-	62	-	-	-	62	-	-	213	-	-	-	213	275
EHC	-	-	25	-	-	-	25	-	-	55	-	-	-	55	80
ELOND	-	-	58	-	-	-	58	-	-	155	-	-	-	155	213
EPSTG	-	-	1	-	-	-	1	-	-	16	-	-	-	16	17
EXETR	1	-	-	-	-	18	19	35	-	-	-	-	79	114	133
FORES	-	-	1	-	-	-	1	-	-	16	-	-	-	16	17
GATE	2	-	-	-	-	-	2	26	-	-	-	-	-	26	28
GLASG	-	-	40	-	-	-	40	-	-	215	-	-	-	215	255
GLOS	1	-	32	-	-	-	33	18	-	98	-	-	-	116	149
GOLD	-	-	-	-	23	8	31	49	-	-	-	46	67	162	193
GREEN	-	-	13	-	-	-	13	-	-	75	3	-	-	78	91
HERTS	1	-	5	-	16	-	22	48	-	54	-	49	-	151	173
HFE	-	-	7	-	-	-	7	-	-	19	-	-	-	19	26
HULL	7	-	15	2	-	-	24	54	-	46	17	-	-	117	141
INEL	-	-	24	5	-	-	29	-	-	197	22	-	-	219	248
JEPS	-	-	1	-	-	-	1	-	-	14	-	-	-	14	15
KING	-	-	26	5	-	-	31	-	-	73	25	-	-	98	129
LDBS	-	-	-	-	-	-	-	8	-	-	-	-	-	8	8
LEEDS	-	-	22	-	-	-	22	-	-	100	-	-	-	100	122
LEICR	1	-	-	-	17	-	18	43	-	-	-	57	-	100	118
LEICS	-	-	6	-	-	-	6	-	-	20	-	-	-	20	26
LHOPE	1	-	35	4	-	1	41	21	-	128	38	-	4	191	232
LJM	1	-	-	-	-	-	1	20	-	-	-	-	-	20	21
LMU	-	-	2	-	-	-	2	23	-	10	-	-	-	33	35
LONMT	14	-	-	-	21	-	35	67	-	-	-	37	-	104	139
LONSB	5	-	31	-	-	-	36	50	-	119	-	-	-	169	205
MANU	-	-	16	-	-	-	16	-	-	88	-	-	-	88	104
MARJ	-	-	19	2	-	-	21	-	-	39	10	-	-	49	70
MIDDX	2	-	9	-	-	-	11	22	-	52	-	-	-	74	85
MMU	-	-	23	3	-	-	26	31	-	104	24	-	-	159	185

TABLE D continued

Institution	Male							Female							Grand Total
	LPR	LPRS	PR	PRS	UPR	UPRS	Total	LPR	LPRS	PR	PRS	UPR	UPRS	Total	
NEWC	-	-	14	2	-	-	16	-	-	56	14	-	-	70	86
NORTH	3	-	21	-	-	-	24	26	-	108	-	-	-	134	158
NOSS	-	-	12	-	-	-	12	-	-	67	-	-	-	67	79
NOTRE	-	-	12	4	-	-	16	-	-	46	2	-	-	48	64
NPORT	-	-	5	-	-	-	5	-	-	29	-	-	-	29	34
NTON	4	-	-	-	10	-	14	30	-	-	-	21	-	51	65
NWMAN	3	-	12	2	-	-	17	20	-	43	26	-	-	89	106
OXFD	4	-	43	-	-	-	47	52	-	162	-	-	-	214	261
PCP	-	-	-	-	-	-	-	-	-	1	-	-	-	1	1
PILG	4	-	-	-	-	-	4	22	-	-	-	-	-	22	26
PLYM	-	-	14	-	-	-	14	-	-	51	-	-	-	51	65
POOLE	-	-	7	-	-	-	7	-	-	10	-	-	-	10	17
PPS	-	-	7	-	-	-	7	-	-	18	-	-	-	18	25
READG	1	-	4	-	-	-	5	26	-	12	7	-	-	45	50
ROE	5	7	-	-	-	23	35	52	52	-	-	-	94	198	233
SELS	-	-	3	-	-	-	3	-	-	32	-	-	-	32	35
SHIRE	-	-	2	-	-	-	2	-	-	12	-	-	-	12	14
SHU	-	-	25	-	-	-	25	26	-	49	-	-	-	75	100
SMART	-	-	86	-	-	-	86	-	-	342	-	-	-	342	428
SMARY	-	-	19	-	-	-	19	-	-	148	-	-	-	148	167
SOTON	-	-	13	-	-	-	13	-	-	115	11	-	-	126	139
STEP	-	-	3	-	-	-	3	-	-	12	-	-	-	12	15
STRAT	-	-	75	-	-	-	75	-	-	350	-	-	-	350	425
SUND	-	-	4	2	-	-	6	-	-	11	11	-	-	22	28
SWIHE	1	-	-	-	13	-	14	40	-	-	-	33	-	73	87
TCC	-	-	13	-	-	-	13	-	-	56	-	-	-	56	69
TPC	-	-	-	-	1	-	1	2	-	-	-	2	-	4	5
WANDS	3	-	3	-	-	-	6	6	-	12	-	-	-	18	24
WARWK	-	-	14	-	-	-	14	47	-	88	-	-	-	135	149
WEMER	2	-	-	-	-	-	2	11	-	-	-	-	-	11	13
WIN	-	-	7	-	-	-	7	-	-	43	-	-	-	43	50
WOLVN	-	-	17	-	-	-	17	-	-	48	-	-	-	48	65
WORCS	-	-	13	-	-	-	13	20	-	75	-	-	-	95	108
YSJ	5	-	-	-	24	-	29	50	-	-	-	51	-	101	130
Grand total	107	7	1201	40	216	60	1631	1486	52	5250	273	488	291	7840	9471

LPR = Lower Primary (3/5-8 years KS1)

PR = Primary (3/5-11 years KS1 & 2)

UPR = Upper Primary (7-11 years KS2)

LPRS = Lower Primary Specialised Subjects (3/5-8 years KS1)

PRS = Primary Specialised Subjects (3/5-11 years KS1 & 2)

UPRS = Upper Primary Specialised Subjects (7-11 years KS2)

TABLE D1

Numbers Accepted for Middle Years Age Range Courses by Institution

Institution	Male			Female			Grand Total
	MID	MIDNS	Total	MID	MIDNS	Total	
BASPA	-	13	13	-	45	45	58
BATH	-	9	9	-	17	17	26
BED	4	-	4	13	-	13	17
BRC	-	1	1	-	3	3	4
CAM	-	10	10	-	47	47	57
CANCC	-	15	15	-	39	39	54
CHICH	-	-	-	-	11	11	11
ELOND	-	-	-	-	4	4	4
LJM	-	-	-	-	20	20	20
LONMT	-	7	7	-	10	10	17
NWMAN	-	22	22	-	36	36	58
SUSX	-	10	10	-	16	16	26
Grand	4	87	91	13	248	261	352

MID = Middle Years (7-14 years KS2 & 3)

MIDNS = Middle Years Named Subject (7-14 years KS2 & 3)

KS = Key Stage

TABLE E

Classification of Applicants who were Finally Not Accepted

Subjects	Withdrawal			Unplaced			Grand Total
	M	F	T	M	F	T	
ART	24	94	118	224	627	851	969
DRAMA	11	64	75	98	481	579	654
HISTORY	72	107	179	546	461	1007	1186
MUSIC	26	36	62	135	93	228	290
RE	33	67	100	175	210	385	485
CLASSICS	4	7	11	13	13	26	37
ENGLISH	78	295	373	567	1377	1944	2317
MODERN LANGUAGES	38	143	181	171	409	580	761
WELSH	-	-	-	1	2	3	3
ADULT EDUCATION	10	18	28	65	86	151	179
DESIGN TECHNOLOGY	21	30	51	95	150	245	296
HOME ECONOMICS	1	6	7	1	38	39	46
PHYSICAL EDUCATION	78	66	144	1205	529	1734	1878
BIOLOGY	38	99	137	202	329	531	668
CHEMISTRY	30	43	73	124	118	242	315
COMBINED SCIENCE	41	60	101	223	242	465	566
ENVIRONMENTAL SCIENCE	-	1	1	1	1	2	3
GEOLOGY	-	-	-	4	3	7	7
INFO TECHNOLOGY	44	29	73	291	158	449	522
MATHEMATICS	115	86	201	600	369	969	1170
PHYSICS	36	13	49	96	34	130	179
BUSINESS STUDIES	41	47	88	201	228	429	517
CITIZENSHIP	18	19	37	81	132	213	250
ECONOMICS	1	-	1	5	4	9	10
GEOGRAPHY	30	62	92	146	117	263	355
MODERN STUDIES	1	2	3	49	47	96	99
SOCIAL SCIENCES	6	29	35	57	157	214	249
PRIMARY	251	1292	1543	2312	8857	11169	12712
MIDDLE	7	30	37	59	108	167	204
Not specified in Clearing	7	21	28	767	992	1759	1787
Total	1062	2766	3828	8514	16372	24886	28714

*includes Subject Conversion

M = Male F = Female T = Total

TABLE F**Numbers of Applicants Placed at their Chosen Institutions**

1st Choice	2nd Choice	3rd Choice	4th Choice	Extra	Clearing	Total
16842	2633	927	361	1500	2954	25217

TABLE G**Applicants Taking Examinations and Equivalency Tests**

Number of applicants who were taking English and mathematics GCSEs or seeking equivalency tests to satisfy PGCE course entry requirements.

	Acceptances	Withdrawals	Unplaced	Total
Taking English	135	27	190	352
Taking Maths	483	96	845	1424
Taking English and Maths	107	20	264	391
Equivalence Test English	80	21	150	251
Equivalence Test Maths	231	66	648	945
Equivalence Test English and Maths	65	24	248	337
Equivalence Test English and taking Maths	4	1	12	17
Taking English and Equivalence Test Maths	4	-	19	23
Not applicable*	24108	3573	22510	50191
Total	25217	3828	24886	53931

* These applicants already met the English language and mathematics qualification requirements for entry to PGCE courses when they applied.

TABLE H

Analysis of Applicants and Outcome According to Ethnic Origin

Ethnic Origin	Acceptances				Withdrawals				Unplaced				Total		
	M	F	T	%	M	F	T	%	M	F	T	%	M	F	T
White	6018	14520	20538	49.6	828	2161	2989	7.2	6102	11790	17892	43.2	12948	28471	41419
Black Caribbean	47	126	173	30.7	6	28	34	6	85	272	357	63.3	138	426	564
Black African	191	174	365	23.6	33	43	76	4.9	544	559	1103	71.4	768	776	1544
Black Other	7	24	31	33	1	1	2	2.1	16	45	61	64.9	24	70	94
Indian	153	457	610	40.5	22	101	123	8.2	197	576	773	51.3	372	1134	1506
Pakistani	162	326	488	34.8	30	47	77	5.5	296	542	838	59.7	488	915	1403
Bangladeshi	62	134	196	36.5	13	18	31	5.8	112	198	310	57.7	187	350	537
Chinese	22	62	84	40	7	13	20	9.5	35	71	106	50.5	64	146	210
Asian Other	52	105	157	35.8	4	15	19	4.3	102	160	262	59.8	158	280	438
White and Black Caribbean	21	81	102	48.3	-	8	8	3.8	33	68	101	47.9	54	157	211
White and Black African	16	24	40	38.5	3	3	6	5.8	17	41	58	55.8	36	68	104
White and Asian	53	117	170	49.4	11	20	31	9	46	97	143	41.6	110	234	344
Other mixed	58	143	201	42	7	29	36	7.5	77	165	242	50.5	142	337	479
Other	44	107	151	39.4	10	21	31	8.1	72	129	201	52.5	126	257	383
Unknown	589	1322	1911	40.7	87	258	345	7.3	780	1659	2439	51.9	1456	3239	4695
Grand Total	7495	17722	25217	46.8	1062	2766	3828	7.1	8514	16372	24886	46.1	17071	36860	53931

M = Male F = Female T = Total

All GTTR institutions operate an equal opportunities policy on admissions. To enable institutions to monitor the implementation of this policy, GTTR invited applicants to indicate which of the categories shown in the above table broadly corresponded with their ethnic origins.

TABLE H1

Analysis of Applicants to Middle Years Age Range Courses According to Ethnic Origin

Age	Ethnic Origin of Applicants															Total
	a	f	g	h	i	j	k	l	m	n	o	p	q	r	s	
Middle																
Accepted	15	-	-	-	-	-	1	-	-	-	-	-	-	-	1	17
Withdrawn	2	-	-	-	-	-	-	-	-	-	-	-	-	-	-	2
Unplaced	3	-	2	-	-	-	-	-	-	-	-	-	-	-	1	6
Total	20	-	2	-	-	-	1	-	-	-	-	-	-	-	2	25
Middle Named Subject																
Accepted	256	7	10	2	12	7	4	1	6	-	-	4	2	2	22	335
Withdrawn	23	-	2	-	2	-	-	1	1	-	-	-	1	-	5	35
Unplaced	100	2	9	2	8	5	1	2	2	-	-	1	1	-	28	161
Total	379	9	21	4	22	12	5	4	9	-	-	5	4	2	55	531
Grand total	399	9	23	4	22	12	6	4	9	-	-	5	4	2	57	556

Key for Tables H1 and H2

a White	h Black Other	l Chinese	p White and Asian
f Black Caribbean	i Indian	m Asian Other	q Mixed Other
g Black African	j Pakistani	n White and Black Caribbean	r Other
	k Bangladeshi	o White and Black African	s Unknown

TABLE H2

Analysis of Applicants to Primary Age Range Courses According to Ethnic Origin

Age	Ethnic Origin of Applicants															Total
	a	f	g	h	i	j	k	l	m	n	o	p	q	r	s	
Lower Primary (3/5-8 years KS1)																
Accepted	1375	12	15	-	43	20	6	9	11	9	2	11	15	12	53	1593
Withdrawn	178	4	3	-	15	3	1	1	1	-	-	-	1	2	11	220
Unplaced	1426	31	66	7	73	86	20	7	21	10	7	6	16	11	121	1908
Total	2979	47	84	7	131	109	27	17	33	19	9	17	32	25	185	3721
Lower Primary named subject (3/5-8 years KS1)																
Accepted	54	1	-	-	1	-	-	-	2	-	-	-	1	-	-	59
Withdrawn	7	-	-	-	-	1	-	-	1	-	-	-	-	-	1	10
Unplaced	30	2	1	-	1	-	-	-	1	-	2	-	3	-	8	48
Total	91	3	1	-	2	1	-	-	4	-	2	-	4	-	9	117
Primary (5-11 years KS1 & 2)																
Accepted	5527	26	25	5	143	84	34	20	17	21	9	40	30	25	445	6451
Withdrawn	895	3	11	1	36	27	7	6	4	3	2	11	5	5	88	1104
Unplaced	6240	76	149	10	234	218	77	20	43	22	9	47	63	42	807	8057
Total	12662	105	185	16	413	329	118	46	64	46	20	98	98	72	1340	15612
Primary named subject (5-11 years KS1 & 2)																
Accepted	261	1	2	-	-	1	-	-	2	1	-	2	2	2	39	313
Withdrawn	37	-	-	-	-	1	-	-	-	-	-	1	-	1	6	46
Unplaced	138	1	2	-	1	-	-	-	-	2	1	-	6	1	29	181
Total	436	2	4	-	1	2	-	-	2	3	1	3	8	4	74	540
Upper Primary (7-11 years KS2)																
Accepted	561	9	4	-	19	9	13	1	7	4	1	9	5	4	58	704
Withdrawn	74	3	1	-	4	-	2	-	-	1	-	2	4	-	14	105
Unplaced	555	6	24	3	42	36	16	1	3	2	2	5	2	4	80	781
Total	1190	18	29	3	65	45	31	2	10	7	3	16	11	8	152	1590
Upper Primary named subject (7-11 years KS2)																
Accepted	285	2	1	-	7	2	2	-	1	1	-	1	4	1	44	351
Withdrawn	53	-	1	-	1	-	-	-	-	-	1	-	-	-	2	58
Unplaced	148	3	9	1	3	2	1	-	1	1	2	2	3	1	17	194
Total	486	5	11	1	11	4	3	-	2	2	3	3	7	2	63	603
Grand total	17844	180	314	27	623	490	179	65	115	77	38	137	160	111	1823	22183

KS = Key Stage

TABLE H3

Totals of Applicants by Subject, Age Range and Ethnic Origin

Ethnic Origin	Arts					Languages				Specialist Subjects			
	ART	DRAMA	HISTORY	MUSIC*	RE	CLASSICS	ENGLISH	MODERN LANGUAGES*	WELSH	ADULT EDUCATION	DESIGN TECHNOLOGY*	HOME ECONOMICS	PHYSICAL EDUCATION
White													
Accepted	595	293	693	523	644	28	1622	766	28	180	589	96	877
Withdrawn	102	61	158	52	78	11	296	98	-	21	43	7	128
Unplaced	698	494	876	190	221	25	1467	249	3	89	166	32	1545
Total	1395	848	1727	765	943	64	3385	1113	31	290	798	135	2550
Black Caribbean													
Accepted	4	5	3	5	3	-	20	4	-	2	6	2	2
Withdrawn	1	3	2	1	-	-	4	2	-	2	1	-	-
Unplaced	11	13	4	3	12	-	42	12	-	3	17	-	11
Total	16	21	9	9	15	-	66	18	-	7	24	2	13
Black African													
Accepted	6	2	2	4	12	-	14	16	-	3	19	3	4
Withdrawn	-	2	-	1	7	-	5	5	-	1	2	-	1
Unplaced	12	6	10	2	42	-	65	31	-	10	14	1	18
Total	18	10	12	7	61	-	84	52	-	14	35	4	23
Black Other													
Accepted	-	2	-	-	1	-	3	2	-	1	3	-	2
Withdrawn	-	-	-	-	-	-	-	-	-	-	-	-	-
Unplaced	-	4	-	-	1	-	7	7	-	-	-	1	2
Total	-	6	-	-	2	-	10	9	-	1	3	1	4
Indian													
Accepted	5	1	11	1	9	-	34	9	-	13	14	3	3
Withdrawn	1	-	2	-	1	-	13	1	-	1	1	-	2
Unplaced	15	3	16	1	16	-	44	6	-	7	7	1	11
Total	21	4	29	2	26	-	91	16	-	21	22	4	16
Pakistani													
Accepted	2	1	6	-	41	1	28	8	-	10	6	2	5
Withdrawn	1	-	-	1	5	-	7	1	-	-	-	-	3
Unplaced	6	2	14	-	30	-	45	5	-	17	3	-	8
Total	9	3	20	1	76	1	80	14	-	27	9	2	16
Bangladeshi													
Accepted	6	1	5	-	10	-	18	2	-	2	5	1	-
Withdrawn	1	-	1	-	1	-	2	-	-	-	1	-	-
Unplaced	2	1	2	-	10	-	29	1	-	5	4	-	6
Total	9	2	8	-	21	-	49	3	-	7	10	1	6
Chinese													
Accepted	2	-	-	5	-	1	3	11	-	-	1	-	1
Withdrawn	-	-	-	-	-	-	1	1	-	1	-	-	2
Unplaced	7	-	-	-	2	-	7	12	-	1	2	1	2
Total	9	-	-	5	2	1	11	24	-	2	3	1	5

Sciences

Social Sciences

BIOLOGY	CHEMISTRY	COMBINED SCIENCE*	ENVIRONMENTAL SCIENCE	GEOLOGY	INFO TECHNOLOGY*	MATHEMATICS*	PHYSICS	BUSINESS STUDIES*	CITIZENSHIP	ECONOMICS	GEOGRAPHY	MODERN STUDIES	SOCIAL STUDIES	PRIMARY	MIDDLE*	CLEARING†	TOTAL
734	397	765	2	7	474	1173	308	451	155	16	669	45	74	8063	271	-	20538
108	58	67	1	-	48	131	36	60	26	1	80	2	25	1244	25	22	2989
369	138	230	-	6	196	381	81	218	125	4	220	90	159	8537	103	980	17892
1211	593	1062	3	13	718	1685	425	729	306	21	969	137	258	17844	399	1002	41419
6	4	4	-	-	16	13	2	8	4	-	2	-	-	51	7	-	173
1	-	2	-	-	1	2	-	2	-	-	-	-	-	10	-	-	34
2	-	3	-	-	12	16	-	4	13	-	2	-	5	119	2	51	357
9	4	9	-	-	29	31	2	14	17	-	4	-	5	180	9	51	564
12	10	35	1	-	43	71	4	24	16	2	3	-	2	47	10	-	365
3	-	4	-	-	3	12	2	4	3	-	-	-	1	16	2	2	76
34	25	76	1	-	70	169	3	54	23	1	6	-	4	251	11	164	1103
49	35	115	2	-	116	252	9	82	42	3	9	-	7	314	23	166	1544
-	-	2	-	-	4	1	-	-	2	-	-	-	1	5	2	-	31
-	-	-	-	-	-	1	-	-	-	-	-	-	-	1	-	-	2
-	-	-	-	-	5	1	1	2	1	-	-	-	3	21	2	3	61
-	-	2	-	-	9	3	1	2	3	-	-	-	4	27	4	3	94
24	18	43	-	-	53	81	5	30	12	1	11	-	4	213	12	-	610
5	2	13	-	-	8	4	2	4	-	-	-	-	5	56	2	-	123
21	11	25	-	-	32	51	11	31	5	-	1	-	14	354	8	82	773
50	31	81	-	-	93	136	18	65	17	1	12	-	23	623	22	82	1506
19	19	41	-	-	74	47	5	30	4	2	6	-	8	116	7	-	488
4	1	1	-	-	7	5	1	3	2	-	-	-	-	32	-	3	77
31	17	35	-	-	44	71	7	37	10	1	1	-	11	342	5	96	838
54	37	77	-	-	125	123	13	70	16	3	7	-	19	490	12	99	1403
4	8	13	-	-	23	20	2	7	5	-	3	-	1	55	5	-	196
1	2	2	-	-	1	6	-	2	-	-	-	-	1	10	-	-	31
9	6	11	-	-	20	27	2	9	9	-	-	-	3	114	1	39	310
14	16	26	-	-	44	53	4	18	14	-	3	-	5	179	6	39	537
6	4	1	-	-	2	11	1	-	-	-	2	-	2	30	1	-	84
-	1	-	-	-	-	4	1	-	-	-	-	-	1	7	1	-	20
1	3	-	-	-	6	16	-	-	-	1	-	-	1	28	2	14	106
7	8	1	-	-	8	31	2	-	-	1	2	-	4	65	4	14	210

* includes Subject Conversion

Continued overleaf

† These are applicants whose applications were received at the GTTR after 30 June 2007 and were entered directly into Clearing. No course choices are recorded for these applicants, so if they subsequently withdrew their application or were unplaced at the end of the application cycle, it was not possible to include them in the figures for secondary teaching subjects, primary or middle years teaching. Applicants who went directly into Clearing and obtained a place have been included in the acceptance figures for the appropriate secondary teaching subject, primary or middle years teaching.

TABLE H3 continued

Ethnic Origin	Arts					Languages				Specialist Subjects			
	ART	DRAMA	HISTORY	MUSIC*	RE	CLASSICS	ENGLISH	MODERN LANGUAGES*	WELSH	ADULT EDUCATION	DESIGN TECHNOLOGY*	HOME ECONOMICS	PHYSICAL EDUCATION
Asian Other													
Accepted	3	2	-	1	5	-	6	8	-	-	5	-	1
Withdrawn	1	1	-	1	1	-	1	1	-	-	-	-	-
Unplaced	6	1	4	2	6	-	15	2	-	7	1	-	-
Total	10	4	4	4	12	-	22	11	-	7	6	-	1
White and Black Caribbean													
Accepted	2	1	3	-	5	-	19	4	-	1	2	1	6
Withdrawn	-	-	1	-	-	-	-	1	-	-	-	-	1
Unplaced	5	3	1	-	2	-	7	2	-	1	5	-	10
Total	7	4	5	-	7	-	26	7	-	2	7	1	17
White and Black African													
Accepted	1	-	-	-	2	-	1	4	-	-	1	-	3
Withdrawn	-	-	-	-	-	-	-	-	-	-	-	-	-
Unplaced	3	2	2	-	-	-	8	3	-	-	-	-	1
Total	4	2	2	-	2	-	9	7	-	-	1	-	4
White and Asian													
Accepted	6	4	4	7	7	-	24	9	-	-	1	-	5
Withdrawn	1	1	4	1	1	-	4	-	-	-	-	-	1
Unplaced	6	6	7	3	3	-	12	3	-	-	4	-	6
Total	13	11	15	11	11	-	40	12	-	-	5	-	12
Mixed Other													
Accepted	10	3	2	5	6	1	25	15	-	1	9	-	3
Withdrawn	1	4	1	-	1	-	5	4	-	1	1	-	1
Unplaced	12	8	5	1	5	-	28	9	-	3	3	-	10
Total	23	15	8	6	12	1	58	28	-	5	13	-	14
Other													
Accepted	5	2	4	3	8	-	9	20	-	-	4	1	2
Withdrawn	-	1	1	-	1	-	4	4	-	-	-	-	-
Unplaced	10	6	2	1	2	-	19	18	-	1	4	-	5
Total	15	9	7	4	11	-	32	42	-	1	8	1	7
Unknown													
Accepted	36	4	31	33	42	-	101	450	1	7	40	7	27
Withdrawn	9	2	9	5	4	-	31	63	-	1	2	-	5
Unplaced	58	30	64	25	33	1	149	220	-	7	15	3	99
Total	103	36	104	63	79	1	281	733	1	15	57	10	131
Grand Total	1652	975	1950	877	1280	68	4244	2089	32	399	1001	162	2819

Sciences								Social Sciences										
BIOLOGY	CHEMISTRY	COMBINED SCIENCE*	ENVIRONMENTAL SCIENCE	GEOLOGY	INFO TECHNOLOGY*	MATHEMATICS*	PHYSICS	BUSINESS STUDIES*	CITIZENSHIP	ECONOMICS	GEOGRAPHY	MODERN STUDIES	SOCIAL STUDIES	PRIMARY	MIDDLE*	CLEARING†	TOTAL	
8	7	16	-	-	14	28	2	3	1	-	-	-	1	40	6	-	157	
-	-	1	-	-	2	1	1	1	-	-	-	-	-	6	1	-	19	
11	8	12	-	-	14	52	1	4	1	-	1	-	1	69	2	42	262	
19	15	29	-	-	30	81	4	8	2	-	1	-	2	115	9	42	438	
3	-	5	-	-	5	2	-	2	2	-	2	-	1	36	-	-	102	
-	-	-	-	-	-	-	-	-	1	-	-	-	-	4	-	-	8	
3	-	3	-	-	-	2	-	-	4	-	-	-	-	37	-	16	101	
6	-	8	-	-	5	4	-	2	7	-	2	-	1	77	-	16	211	
1	-	1	-	-	3	6	-	1	-	-	3	-	1	12	-	-	40	
1	-	-	-	-	-	-	-	1	-	-	1	-	-	3	-	-	6	
-	-	1	-	-	-	4	1	2	1	-	-	-	2	23	-	5	58	
2	-	2	-	-	3	10	1	4	1	-	4	-	3	38	-	5	104	
3	3	9	-	1	3	9	2	-	2	-	3	-	1	63	4	-	170	
-	1	-	-	-	-	2	1	-	-	-	-	-	-	14	-	-	31	
2	-	2	-	-	4	6	2	1	1	-	-	1	1	60	1	12	143	
5	4	11	-	1	7	17	5	1	3	-	3	1	2	137	5	12	344	
11	6	11	-	-	3	14	1	5	5	1	2	-	3	57	2	-	201	
1	-	2	-	-	-	-	-	-	1	-	-	-	2	10	1	-	36	
4	-	2	-	-	2	11	1	6	5	-	2	-	1	93	1	30	242	
16	6	15	-	-	5	25	2	11	11	1	4	-	6	160	4	30	479	
5	3	7	-	-	10	15	1	5	-	-	1	-	-	44	2	-	151	
-	1	1	-	-	-	8	-	-	1	-	1	-	-	8	-	-	31	
3	6	3	-	-	10	14	4	3	4	-	-	-	1	59	-	26	201	
8	10	11	-	-	20	37	5	8	5	-	2	-	1	111	2	26	383	
45	24	76	-	-	45	154	20	51	12	3	34	2	4	639	23	-	1911	
13	7	8	-	-	3	25	5	11	3	-	10	1	-	122	5	1	345	
41	28	62	1	1	34	148	16	58	11	2	30	5	8	1062	29	199	2439	
99	59	146	1	1	82	327	41	120	26	5	74	8	12	1823	57	200	4695	
1549	818	1595	6	15	1294	2815	532	1134	470	35	1096	146	352	22183	556	1787	53931	

* includes Subject Conversion

† These are applicants whose applications were received at the GTTR after 30 June 2007 and were entered directly into Clearing. No course choices are recorded for these applicants, so if they subsequently withdrew their application or were unplaced at the end of the application cycle, it was not possible to include them in the figures for secondary teaching subjects, primary or middle years teaching. Applicants who went directly into Clearing and obtained a place have been included in the acceptance figures for the appropriate secondary teaching subject, primary or middle years teaching.

TABLE H4

Analysis of Applications and Acceptances by Institution According to Ethnic Origin of Applicants

Ethnic Origin of Applicants																
Institution	White		Black Caribbean		Black African		Black Other		Indian		Pakistani		Bangladeshi		Chinese	
	AP	AC	AP	AC	AP	AC	AP	AC	AP	AC	AP	AC	AP	AC	AP	AC
ABRDN	1361	331	1	-	31	1	2	-	5	1	10	-	8	2	2	1
ABWTH	562	148	1	-	4	1	1	1	3	-	-	-	2	1	1	-
ARU	707	121	5	-	31	6	-	-	6	1	7	-	4	-	1	-
BANGR	855	212	-	-	6	-	-	-	6	1	-	-	1	-	1	-
BASPA	1838	440	4	1	20	2	3	2	21	6	7	2	-	-	4	1
BATH	1179	142	2	-	17	2	-	-	18	5	6	1	1	-	4	-
BEC	100	21	-	-	2	-	-	-	1	-	2	-	2	-	-	-
BED	949	212	17	2	65	4	5	-	51	8	54	4	11	1	3	-
BEDS	140	22	-	-	1	-	-	-	1	-	3	-	1	-	1	-
BFTCS	161	21	13	-	2	-	-	-	29	-	22	1	3	1	2	-
BGC	521	151	-	-	11	1	-	-	3	-	3	-	2	1	-	-
BIRM	1926	228	28	2	60	-	3	-	190	16	190	24	44	5	12	-
BPDES	89	17	-	-	3	1	-	-	-	-	1	-	1	-	-	-
BRC	611	116	5	2	23	-	1	-	56	12	302	42	22	3	1	-
BRISL	1413	204	6	2	23	2	1	-	17	2	9	1	8	-	7	1
BRITN	1816	294	14	1	59	8	3	-	41	8	14	2	5	2	7	1
BROM	168	27	15	-	51	-	2	-	13	-	3	-	3	-	1	-
BRUNL	648	134	44	8	131	9	12	3	174	40	67	14	25	2	11	1
BUWE	1807	256	11	3	28	3	2	1	12	1	21	2	3	-	3	-
CAM	1752	416	7	1	29	3	3	-	38	6	23	7	11	3	20	7
CANCC	1832	455	11	-	77	17	1	-	25	4	4	2	7	2	6	-
CEB	1163	218	52	10	43	3	4	-	135	22	152	12	30	5	7	1
CEY	119	23	1	1	-	-	-	-	-	-	-	-	-	-	-	-
CHICH	1042	190	1	-	17	-	-	-	8	-	5	-	1	-	4	1
CHSTR	1222	160	1	-	14	4	1	-	8	1	10	-	3	-	2	-
CITT	127	15	-	-	2	-	-	-	1	-	1	-	1	-	-	-
COLSC	150	29	2	-	8	-	-	-	1	-	-	-	-	-	-	-
CPTT	140	22	1	1	4	-	-	-	2	-	-	-	-	-	-	-
CSSD	347	36	18	2	7	-	-	-	5	-	1	-	4	1	1	-
CTG	129	22	7	-	41	2	1	-	12	1	21	3	4	-	1	-
CUWIC	1776	351	1	-	11	1	3	1	5	-	10	-	5	-	3	1
DERBY	540	82	3	1	6	-	1	-	21	1	25	2	2	-	1	-
DEVON	166	14	4	-	3	-	1	-	1	-	-	-	-	-	-	-
DORT	143	22	-	-	-	-	-	-	-	-	1	-	-	-	-	-
DPTTG	267	24	1	-	1	-	1	-	3	1	-	-	-	-	-	-
DSAS	138	25	1	-	-	-	-	-	2	-	2	-	2	-	2	2
DUND	940	170	-	-	12	-	1	-	4	-	7	1	3	-	-	-
DUR	1346	260	-	-	7	1	-	-	18	2	11	3	3	-	2	1
EANGL	1389	308	3	1	18	-	-	-	18	3	4	-	1	-	6	-
EDINB	2730	442	2	-	27	1	2	-	12	2	23	1	2	-	10	5
ELC	2496	477	10	-	33	6	3	-	59	14	93	22	15	2	6	2
ELOND	1176	182	119	7	454	17	22	2	218	26	200	21	204	22	21	2
EPSTG	198	17	1	-	8	-	-	-	5	-	2	-	-	-	1	-
EXETR	2136	502	6	-	19	1	1	-	10	1	2	-	3	1	14	-
FORES	49	13	1	-	1	-	-	-	5	1	1	-	2	-	-	-
GATE	131	27	-	-	-	-	-	-	2	-	-	-	-	-	-	-
GITEP	127	26	-	-	9	-	-	-	6	1	3	1	1	-	-	-
GLASG	2782	383	1	-	27	1	2	-	25	2	47	4	3	-	5	-
GLOS	1330	241	4	1	10	2	1	-	23	3	12	2	14	2	-	-
GOLD	1805	257	138	16	260	17	21	3	127	16	73	8	115	17	44	8
GRAND	91	-	-	-	6	-	1	-	10	-	-	-	-	-	2	-
GREEN	797	128	71	10	236	20	12	2	64	7	46	3	52	5	19	1
HARS	4	1	-	-	1	-	-	-	-	-	-	-	-	-	-	-
HERTS	781	197	10	1	70	8	3	-	79	10	49	7	11	1	4	2
HFE	219	26	-	-	-	-	-	-	3	-	-	-	-	-	1	-
HUDDS	547	113	6	-	24	1	-	-	27	6	142	19	10	-	4	1
HULL	949	244	1	-	24	2	1	-	6	1	18	-	3	1	5	-
INEL	3112	620	151	13	413	32	29	2	324	49	201	30	208	31	37	6
JEPS	26	12	1	-	2	-	-	-	-	-	-	-	-	-	-	-
KCL	1051	133	47	2	214	6	14	-	130	9	102	1	110	10	25	1
KEELE	764	62	3	-	24	-	2	-	47	2	37	1	10	-	2	-
KING	864	150	31	4	111	3	7	-	81	6	46	4	19	2	11	4
KMT	62	-	1	-	19	-	-	-	2	-	4	-	1	-	-	-
LAC	170	8	5	-	3	-	-	-	3	-	1	-	2	1	2	-
LBRO	710	113	5	1	11	1	2	-	41	8	15	1	2	-	4	-
LDBS	54	7	10	-	14	-	1	-	6	-	6	-	3	-	-	-
LDSS	4	-	-	-	-	-	-	-	-	-	-	-	-	-	-	-

AP = Applications AC = Acceptances

Ethnic Origin of Applicants

Asian Other		White and Black Caribbean		White and Black African		Mixed Other		White and Asian		Other		Unknown		Total	
AP	AC	AP	AC	AP	AC	AP	AC	AP	AC	AP	AC	AP	AC	AP	AC
5	2	-	-	1	-	5	-	1	-	12	5	202	32	1646	375
2	2	2	1	-	-	3	1	5	-	2	2	251	47	839	204
3	1	2	-	1	1	9	1	10	3	12	2	78	19	876	155
1	-	2	-	-	-	2	2	2	-	1	-	204	30	1081	245
7	3	2	1	3	1	11	1	16	4	4	2	102	14	2042	480
8	1	1	-	3	-	11	2	9	1	4	-	134	7	1397	161
-	-	-	-	-	-	-	-	-	-	1	-	7	-	115	21
3	1	5	2	4	-	10	1	10	1	9	2	113	14	1309	252
1	-	-	-	-	-	1	-	2	-	-	-	10	2	161	24
2	-	6	2	1	-	-	-	4	-	-	-	10	-	255	25
3	-	1	-	2	-	2	-	3	-	-	-	8	2	559	155
33	2	26	2	3	1	14	1	21	1	16	3	258	17	2824	302
-	-	-	-	-	-	2	-	1	1	1	-	17	1	115	20
11	-	5	2	-	-	6	1	2	-	4	-	46	9	1095	187
6	-	1	-	5	-	16	5	17	4	4	-	198	30	1731	251
8	1	10	3	1	-	20	4	36	4	17	5	258	28	2309	361
4	-	2	-	-	-	4	-	-	-	4	-	32	-	302	27
57	6	12	2	8	-	14	1	27	4	52	9	205	39	1487	272
11	-	2	1	11	2	14	2	23	3	2	-	198	30	2148	304
19	1	4	3	1	-	19	5	24	6	16	2	262	20	2228	480
9	3	4	-	3	1	9	3	30	5	7	-	268	56	2293	548
13	3	20	4	2	-	13	3	16	2	7	-	63	6	1720	289
-	-	-	-	2	-	2	-	1	-	-	-	1	-	126	24
7	-	3	-	-	-	7	1	8	-	9	-	91	8	1203	200
3	-	4	1	4	-	4	-	7	1	1	1	110	25	1394	193
1	-	-	-	-	-	3	1	2	-	-	-	22	2	160	18
2	-	2	-	-	-	3	1	2	-	6	-	21	1	197	31
-	-	1	-	1	-	-	-	1	-	1	-	19	1	170	24
4	-	1	-	2	-	6	1	4	1	8	1	15	-	423	42
4	1	2	-	-	-	-	-	-	-	4	1	25	2	251	32
3	1	1	1	2	1	10	2	16	2	2	-	233	24	2081	385
1	1	2	1	-	-	2	1	3	-	2	-	21	1	630	90
-	-	-	-	1	-	-	-	1	-	2	-	25	1	204	15
-	-	-	-	1	-	-	-	-	-	1	-	9	-	155	22
-	-	-	-	1	-	2	2	1	-	-	-	20	1	297	28
2	1	1	-	-	-	1	-	1	-	-	-	4	-	156	28
2	-	-	-	-	-	3	-	4	-	5	-	108	9	1089	180
1	-	1	-	1	-	8	3	3	-	6	2	89	19	1496	291
6	1	2	1	-	-	9	2	10	-	8	2	103	20	1577	338
3	-	4	-	2	-	18	3	14	2	7	3	370	37	3226	496
9	-	12	4	7	1	18	4	20	2	7	1	216	65	3004	600
94	7	24	2	9	1	29	5	44	3	62	5	591	72	3267	374
-	-	-	-	-	-	1	-	1	-	1	-	17	-	235	17
1	-	4	-	4	1	17	6	20	7	11	-	165	26	2413	545
-	-	3	1	1	1	2	-	-	-	3	1	5	-	73	17
-	-	-	-	-	-	-	-	3	1	1	-	2	-	139	28
2	1	1	-	-	-	-	-	-	-	-	-	10	1	159	30
3	-	1	-	1	-	4	-	8	2	4	-	297	73	3210	465
3	-	3	-	2	-	10	-	8	-	5	-	96	9	1521	260
81	9	31	6	18	2	46	6	68	7	75	10	357	44	3259	426
2	-	1	-	-	-	-	-	1	-	1	-	14	-	129	-
26	2	15	1	7	1	17	2	20	1	35	-	153	13	1570	196
-	-	-	-	-	-	-	-	1	-	-	-	4	-	10	1
20	3	8	2	4	-	12	6	18	4	19	3	76	11	1164	255
1	-	1	-	-	-	-	-	-	-	-	-	10	-	235	26
4	1	5	1	1	-	-	-	5	-	6	1	33	3	814	146
4	-	-	-	-	-	7	1	2	-	2	-	85	15	1107	264
126	15	41	11	30	3	56	14	114	18	103	10	586	70	5531	924
1	-	-	-	-	-	2	2	-	-	1	1	2	-	35	15
83	7	10	-	10	-	17	2	37	4	48	8	243	19	2141	202
3	-	1	-	2	-	3	1	7	-	6	1	71	1	982	68
44	8	9	1	9	-	17	1	23	3	23	1	197	22	1492	209
1	-	-	-	-	-	-	-	-	-	1	-	14	-	105	-
3	-	2	-	-	-	2	-	5	1	4	-	16	1	218	11
7	1	1	-	3	1	2	-	6	1	1	-	40	1	850	128
3	-	1	1	1	-	-	-	-	-	2	-	9	-	110	8
-	-	-	-	-	-	-	-	-	-	-	-	-	-	4	-

AP = Applications AC = Acceptances

Continued overleaf

TABLE H4 continued

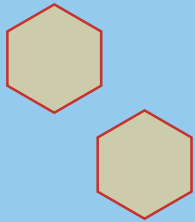
Ethnic Origin of Applicants																
Institution	White		Black Caribbean		Black African		Black Other		Indian		Pakistani		Bangladeshi		Chinese	
	AP	AC	AP	AC	AP	AC	AP	AC	AP	AC	AP	AC	AP	AC	AP	AC
LEEDS	1544	318	6	3	21	5	2	-	41	11	96	17	8	-	12	3
LEICR	1432	216	13	1	41	3	4	-	240	37	85	5	16	2	10	1
LEICS	207	15	1	-	4	-	1	-	52	6	10	-	3	-	-	-
LETAS	1167	158	6	-	29	1	-	-	53	1	156	13	7	-	3	-
LHOPE	3293	456	11	2	38	6	7	1	42	6	76	6	17	-	6	-
LINS	90	16	5	-	5	-	-	-	5	-	2	-	3	-	-	-
LJM	1602	251	6	1	23	1	1	-	20	-	23	6	6	-	14	2
LMU	1252	48	3	-	8	-	-	-	29	-	74	5	5	-	2	-
LONMT	1432	154	139	13	433	28	25	1	156	15	115	10	120	11	19	3
LONSB	773	128	76	7	206	7	7	1	96	10	61	13	49	1	17	2
MANU	2107	250	17	3	48	2	4	-	83	9	127	10	30	4	15	-
MARCH	284	44	3	1	11	1	-	-	4	1	14	2	4	2	1	-
MARJ	873	190	2	-	6	-	-	-	-	-	4	-	-	-	1	-
MIDDL	82	13	-	-	3	-	1	-	3	-	4	1	2	1	-	-
MIDDX	1451	206	128	10	339	26	20	4	207	22	105	13	77	6	14	2
MIDES	81	16	1	-	9	-	-	-	2	-	1	-	1	-	-	-
MMU	4263	633	24	5	85	10	5	1	118	13	204	17	46	9	17	1
NBEDS	91	13	1	-	11	2	-	-	5	-	2	-	-	-	-	-
NEECC	40	6	1	-	2	-	-	-	-	-	-	-	-	-	-	-
NEWC	1268	226	-	-	9	-	-	-	12	1	7	1	6	2	2	1
NORTH	1247	214	1	-	2	-	-	-	10	1	4	-	6	-	2	-
NOSS	284	72	-	-	2	-	-	-	12	4	8	-	-	-	2	1
NOTRE	1050	202	11	1	28	4	1	-	107	19	49	8	9	-	9	2
NOTTM	962	178	8	1	28	4	2	-	66	4	39	7	4	-	10	1
NPORT	587	114	-	-	8	1	-	-	7	1	1	1	1	1	1	-
NTON	338	61	4	1	5	-	-	-	9	1	5	-	4	-	1	-
NTPP	81	11	3	-	5	-	-	-	9	-	2	-	1	-	-	-
NWMAN	810	184	36	6	24	2	5	1	74	10	119	11	23	5	3	-
OXF	910	138	2	-	20	1	1	-	26	3	20	4	8	1	12	1
OXFD	1389	393	7	1	25	5	1	-	29	6	31	5	3	-	4	-
PCP	74	1	1	-	-	-	-	-	-	-	-	-	-	-	-	-
PILG	69	23	1	1	3	1	-	-	6	1	1	-	-	-	-	-
PLYM	746	120	4	1	4	-	-	-	1	-	2	-	-	-	1	1
POOLE	104	17	-	-	1	-	-	-	-	-	1	-	-	-	-	-
PORT	343	84	2	1	19	4	-	-	4	1	-	-	3	-	3	-
PPS	158	23	-	-	-	-	-	-	1	-	2	-	1	-	-	-
RAD	97	17	2	1	2	1	2	-	-	-	-	-	-	-	-	-
READG	1505	159	6	-	41	3	1	-	49	3	35	3	8	1	7	-
ROE	1566	352	71	4	167	14	10	3	104	13	63	6	31	4	12	2
SELS	49	15	5	1	13	1	-	-	14	6	13	2	4	1	-	-
SHEFD	789	137	1	-	15	1	1	-	14	1	16	-	1	-	6	-
SHIRE	51	8	2	1	5	1	1	-	4	-	11	2	3	1	-	-
SHU	2236	397	16	1	48	7	3	1	48	9	109	12	17	-	13	4
SMART	1960	610	9	1	44	5	2	-	56	10	58	13	45	6	3	1
SMARY	794	198	24	4	109	7	4	-	72	13	27	3	12	1	4	2
SOTON	1622	335	4	1	26	2	-	-	17	1	9	3	5	1	3	1
STAFF	117	29	6	1	9	1	-	-	15	2	9	-	3	-	1	-
STEP	89	15	-	-	-	-	-	-	1	-	-	-	-	-	-	-
STRAT	3795	889	1	1	22	2	2	1	24	8	50	8	1	1	6	1
SUND	861	196	-	-	17	2	-	-	11	2	10	1	6	1	-	-
SUSX	562	128	1	-	20	5	-	-	8	-	8	1	5	1	1	-
SWIHE	1348	370	3	1	9	1	2	-	8	2	2	-	3	1	2	-
SWIND	82	20	-	-	7	3	-	-	4	1	-	-	1	-	-	-
SWTT	46	1	-	-	5	-	-	-	-	-	-	-	-	-	-	-
TCC	324	81	-	-	2	-	-	-	-	-	3	2	2	-	-	-
TITAN	111	5	10	-	10	-	4	-	19	-	25	-	6	-	1	-
TPC	41	5	-	-	2	-	-	-	1	-	-	-	-	-	1	-
TVU	39	6	5	-	6	-	-	-	6	1	3	-	1	-	-	-
WANDS	143	20	9	-	9	-	-	-	9	2	7	-	4	-	-	-
WARWK	1825	310	28	2	39	2	4	-	198	19	155	10	30	4	10	-
WEMER	96	12	-	-	1	-	-	-	2	-	5	-	-	-	-	-
WIN	346	49	-	-	1	-	-	-	-	-	2	-	2	-	-	-
WMC	98	5	1	-	8	-	-	-	6	-	4	-	2	-	-	-
WOLVN	1203	157	40	2	55	2	5	-	195	21	143	14	31	3	4	1
WORCS	1241	253	11	-	22	2	-	-	33	5	33	5	4	-	-	-
YORK	845	114	-	-	8	-	-	-	13	1	18	-	1	-	3	1
YSJ	714	133	-	-	1	-	-	-	5	1	8	-	2	1	3	-
Grand	113823	20538	1682	173	5116	365	304	31	4734	610	4397	488	1706	196	594	84

AP = Applications AC = Acceptances

Ethnic Origin of Applicants

Asian Other		White and Black Caribbean		White and Black African		Mixed Other		White and Asian		Other		Unknown		Total	
AP	AC	AP	AC	AP	AC	AP	AC	AP	AC	AP	AC	AP	AC	AP	AC
6	2	8	2	2	-	11	2	15	1	13	4	168	20	1953	388
33	4	10	1	5	-	20	2	17	2	9	1	104	11	2039	286
6	-	2	-	-	-	2	1	2	-	1	-	16	4	307	26
6	-	8	1	1	1	9	1	11	2	8	-	114	18	1578	196
8	1	10	-	7	-	24	4	28	1	10	1	559	57	4136	541
1	-	-	-	-	-	1	-	2	-	1	-	8	3	123	19
3	1	6	1	6	2	10	-	12	3	6	-	166	18	1904	286
-	-	3	-	3	-	7	-	-	-	7	-	46	2	1439	55
77	10	32	4	19	2	28	3	57	8	61	12	431	30	3144	304
50	3	4	-	10	2	21	2	22	3	27	4	295	35	1714	218
14	-	9	1	6	1	13	-	17	-	14	-	280	22	2784	302
1	-	2	-	-	-	4	2	5	1	-	-	24	-	357	54
2	1	-	-	1	-	7	1	7	1	4	2	68	27	975	222
-	-	1	-	-	-	-	-	-	-	-	-	2	-	98	15
86	14	23	3	17	2	32	5	56	5	80	13	323	32	2958	363
1	-	1	1	1	-	2	1	1	-	2	-	12	-	115	18
12	3	15	4	8	1	35	2	33	8	32	5	354	48	5251	760
1	-	1	-	-	-	-	-	1	-	1	-	15	9	129	24
-	-	1	-	-	-	2	-	-	-	-	-	8	-	54	6
3	-	-	-	1	-	8	3	8	2	5	-	95	10	1424	246
2	-	2	-	2	-	3	-	6	2	-	-	39	10	1326	227
-	-	2	1	2	-	1	-	1	-	2	-	25	1	341	79
10	1	8	1	-	-	4	-	7	1	5	2	64	10	1362	251
8	-	2	-	-	-	7	-	10	2	6	2	129	21	1281	220
4	-	-	-	-	-	2	-	6	4	1	-	80	4	698	126
1	-	2	1	1	-	3	-	2	-	1	-	13	1	389	65
1	-	-	-	-	-	-	-	1	-	1	-	9	-	113	11
17	4	13	6	1	-	9	3	12	1	8	1	86	16	1240	250
15	3	3	1	2	1	13	3	19	2	12	4	162	21	1225	183
7	1	3	-	2	1	11	4	21	4	8	1	114	22	1655	443
-	-	-	-	-	-	1	-	2	-	1	-	21	-	100	1
1	-	-	-	-	-	-	-	-	-	1	-	2	-	84	26
2	-	-	-	2	1	7	2	2	-	7	-	39	5	817	130
-	-	-	-	-	-	4	-	-	-	-	-	3	-	113	17
4	-	1	1	1	-	3	-	6	2	2	1	81	15	472	109
1	-	2	1	-	-	1	-	3	-	-	-	12	1	181	25
-	-	2	1	1	-	1	-	5	1	2	-	11	-	125	21
17	1	5	1	2	-	16	2	13	1	10	2	144	15	1859	191
40	6	14	-	11	-	27	2	45	8	27	2	208	24	2396	440
1	1	1	1	2	1	1	-	1	1	-	-	14	5	118	35
4	1	3	-	-	-	9	2	7	3	2	-	78	6	946	151
2	-	1	-	1	-	1	1	-	-	-	-	7	-	89	14
12	3	11	3	2	1	18	1	26	7	9	-	103	27	2671	473
7	-	2	-	1	1	20	6	18	4	10	1	297	80	2532	738
26	3	5	1	5	2	8	1	20	4	13	1	495	74	1618	314
11	3	8	1	4	-	14	2	7	1	7	-	201	22	1938	373
-	-	2	-	1	-	1	-	-	-	-	-	15	4	179	37
-	-	-	-	-	-	-	-	-	-	1	-	3	-	94	15
8	1	1	-	3	1	5	-	10	2	7	2	237	52	4172	969
3	2	1	-	5	1	4	-	1	-	4	2	51	9	974	216
5	-	-	-	1	-	11	2	8	2	2	1	97	23	729	163
1	-	1	-	1	-	4	1	7	3	3	-	160	30	1554	409
-	-	-	-	1	-	-	-	1	-	-	-	8	-	104	24
-	-	-	-	-	-	1	-	-	-	-	-	7	-	59	1
1	-	1	1	-	-	-	-	2	-	-	-	96	14	431	98
2	-	2	-	1	-	-	-	1	-	2	-	7	-	201	5
2	-	-	-	-	-	-	-	1	-	-	-	2	-	50	5
5	-	2	-	1	-	-	-	-	-	1	-	10	3	79	10
4	-	1	-	1	-	4	1	6	-	2	-	16	1	215	24
13	2	14	-	1	-	16	2	20	1	25	1	185	12	2563	365
-	-	-	-	1	-	2	-	1	1	-	-	7	-	115	13
2	-	2	-	-	-	1	-	4	1	-	-	9	-	369	50
1	-	1	-	-	-	2	-	-	-	1	-	5	-	129	5
7	-	18	2	4	1	6	-	11	3	14	1	83	12	1819	219
8	1	11	3	-	-	3	-	4	1	2	1	51	8	1423	279
2	-	3	-	-	-	6	1	9	2	2	-	99	14	1009	133
1	-	1	1	-	-	8	5	2	1	1	-	26	3	772	145
1334	157	592	102	325	40	1019	170	1370	201	1141	151	14218	1911	152355	25217

AP = Applications AC = Acceptances



gttr
Graduate Teacher
Training Registry